



# All Things Considered: Detecting Partisan Events from News Media with Cross-Article Comparison

Yujian Liu<sup>1</sup>, Xinliang Frederick Zhang<sup>2</sup>, Kaijian Zou<sup>2</sup>, Ruihong Huang<sup>3</sup>,  
Nick Beauchamp<sup>4</sup>, and Lu Wang<sup>2</sup>

<sup>1</sup>UC Santa Barbara, <sup>2</sup>University of Michigan, <sup>3</sup>Texas A&M University,  
<sup>4</sup>Northeastern University

# Motivation

- The same story reported by left and right media

---

**News Story:** *Biden pushes for gun legislation after visiting Uvalde.*

---

**The Washington Post (left):**

E1: [Jaydien]<sub>ARG0</sub>, . . . , [said]<sub>pred</sub> [he asked the president: “Could you please make our schools safer and send more police, please?”]<sub>ARG1</sub>

E2: [Biden]<sub>ARG0</sub> . . . [noting]<sub>pred</sub>: “[You couldn’t buy a cannon when the Second Amendment was passed]<sub>ARG1</sub>.”

---

**New York Post (right):**

E1: [You]<sub>ARG0</sub> couldn’t [buy]<sub>pred</sub> [a cannon]<sub>ARG1</sub> when the Second Amendment was passed.

E2: Biden has made that claim before, . . . , and they have been repeatedly [declared]<sub>pred</sub> [false]<sub>ARG1</sub> [by fact-checkers]<sub>ARG0</sub>.

# Motivation

- The same story reported by left and right media
- How do even nonpartisan, fact-based news outlets unobtrusively bias their reporting?

---

**News Story:** *Biden pushes for gun legislation after visiting Uvalde.*

---

**The Washington Post** (left):

E1: [Jaydien]<sub>ARG0</sub>, . . . , [said]<sub>pred</sub> [he asked the president: “Could you please make our schools safer and send more police, please?”]<sub>ARG1</sub>

E2: [Biden]<sub>ARG0</sub> . . . [noting]<sub>pred</sub>: “[You couldn’t buy a cannon when the Second Amendment was passed]<sub>ARG1</sub>.”

---

**New York Post** (right):

E1: [You]<sub>ARG0</sub> couldn’t [buy]<sub>pred</sub> [a cannon]<sub>ARG1</sub> when the Second Amendment was passed.

E2: Biden has made that claim before, . . . , and they have been repeatedly [declared]<sub>pred</sub> [false]<sub>ARG1</sub> [by fact-checkers]<sub>ARG0</sub>.



# Partisan event

- Partisan event coverage: choosing which events to include or exclude in news articles could sway public opinions and beliefs

# Partisan event

- Partisan event coverage: choosing which events to include or exclude in news articles could sway public opinions and beliefs
- RQ1: How do partisan events relate to ideology prediction?
- RQ2: How to automatically detect partisan events without large-scale supervision?



# Partisan event & ideology prediction

- Newly annotated dataset: PEvent
  - 50 articles (25 left and 25 right) covering:
    - Mass shooting in Texas
    - Overturn of *Roe v. Wade*

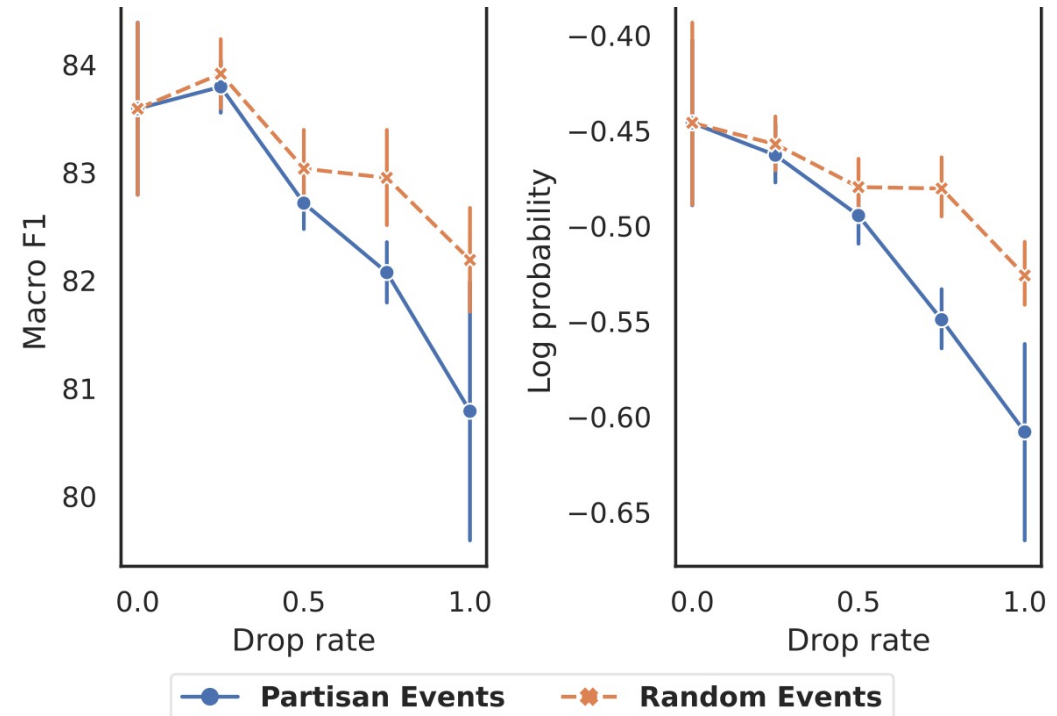


# Partisan event & ideology prediction

- Newly annotated dataset: PEvent
  - 50 articles (25 left and 25 right) covering:
    - Mass shooting in Texas
    - Overturn of *Roe v. Wade*
- Ideology prediction with event representations
  - $\langle \text{ARG0}, \text{predicate}, \text{ARG1} \rangle$
  - Compare performance of dropping partisan event *vs.* random events

# Partisan event & ideology prediction

- Newly annotated dataset: PEvent
  - 50 articles (25 left and 25 right) covering:
    - Mass shooting in Texas
    - Overturn of *Roe v. Wade*
- Ideology prediction with event representations
  - $\langle \text{ARG0}, \text{predicate}, \text{ARG1} \rangle$
  - Compare performance of dropping partisan event *vs.* random events





# Partisan event detection

- Idea: partisan events should benefit ideology prediction

$$\max_{\mathcal{E}_\theta, q_\phi} \sum_{(\mathbf{x}, y) \in \mathcal{D}} \mathbb{E}_{\mathbf{m} \sim \mathcal{E}_\theta(\mathbf{x})} [\log q_\phi(y \mid \mathbf{m} \odot \mathbf{x})]$$

# Partisan event detection

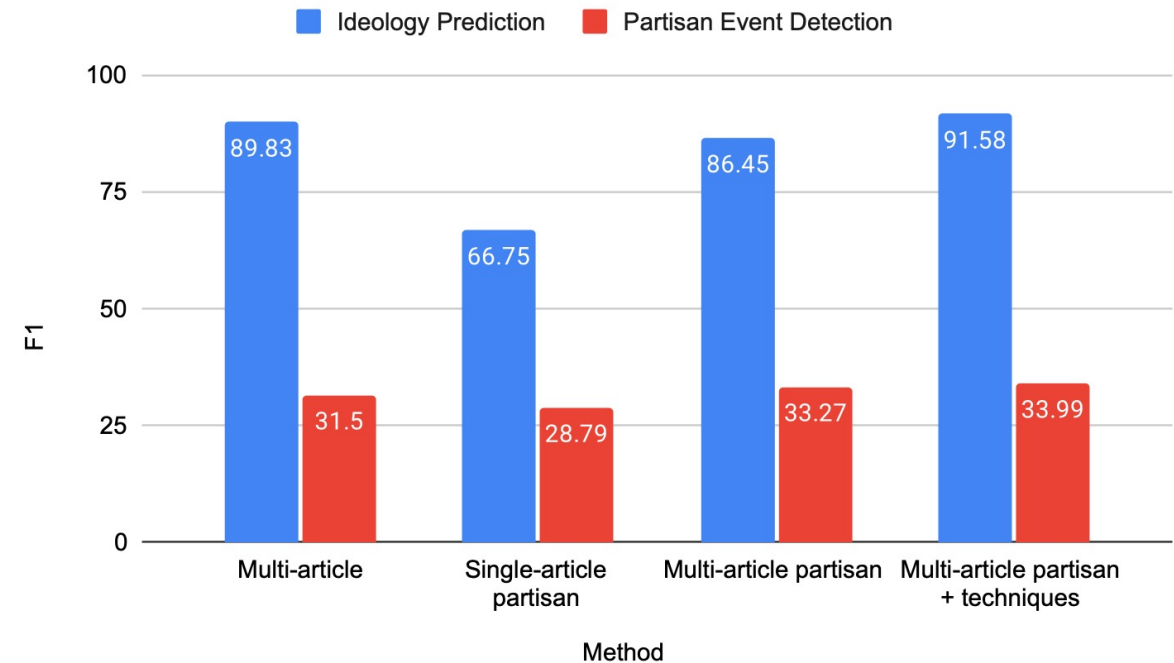
- Idea: partisan events should benefit ideology prediction

$$\max_{\mathcal{E}_\theta, q_\phi} \sum_{(\mathbf{x}, y) \in \mathcal{D}} \mathbb{E}_{\mathbf{m} \sim \mathcal{E}_\theta(\mathbf{x})} [\log q_\phi(y | \mathbf{m} \odot \mathbf{x})]$$

- Additional designs
  - Avoid selecting common events as partisan events
  - Equip model with political knowledge through pre-training

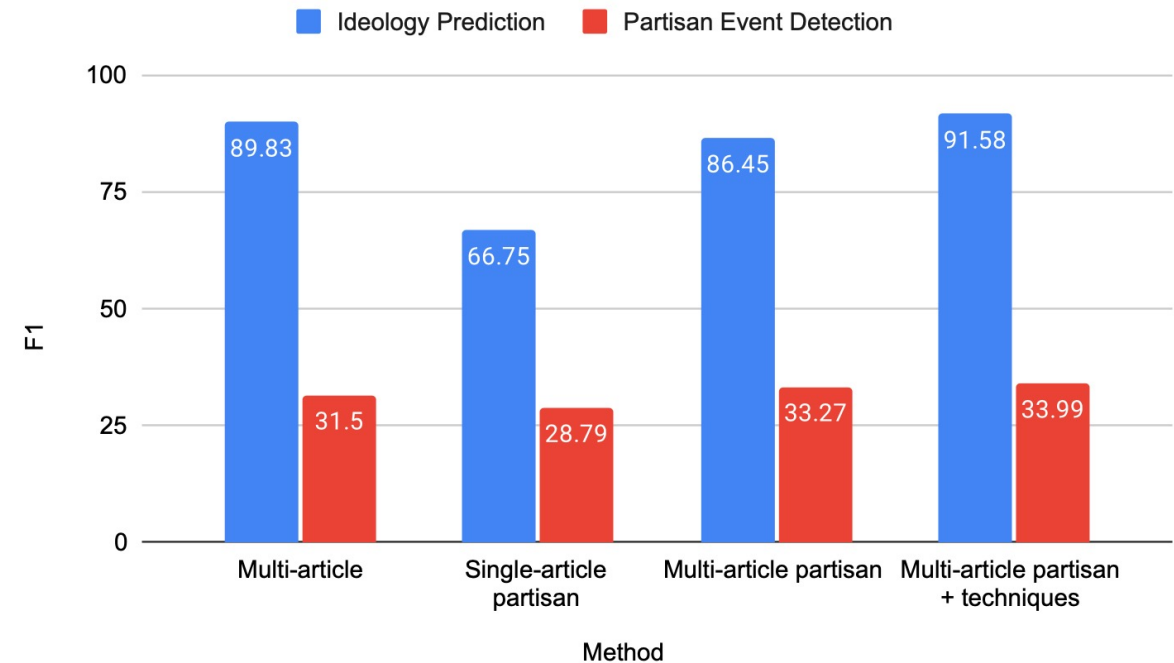
# Partisan event detection

- Cross-article content comparison is important



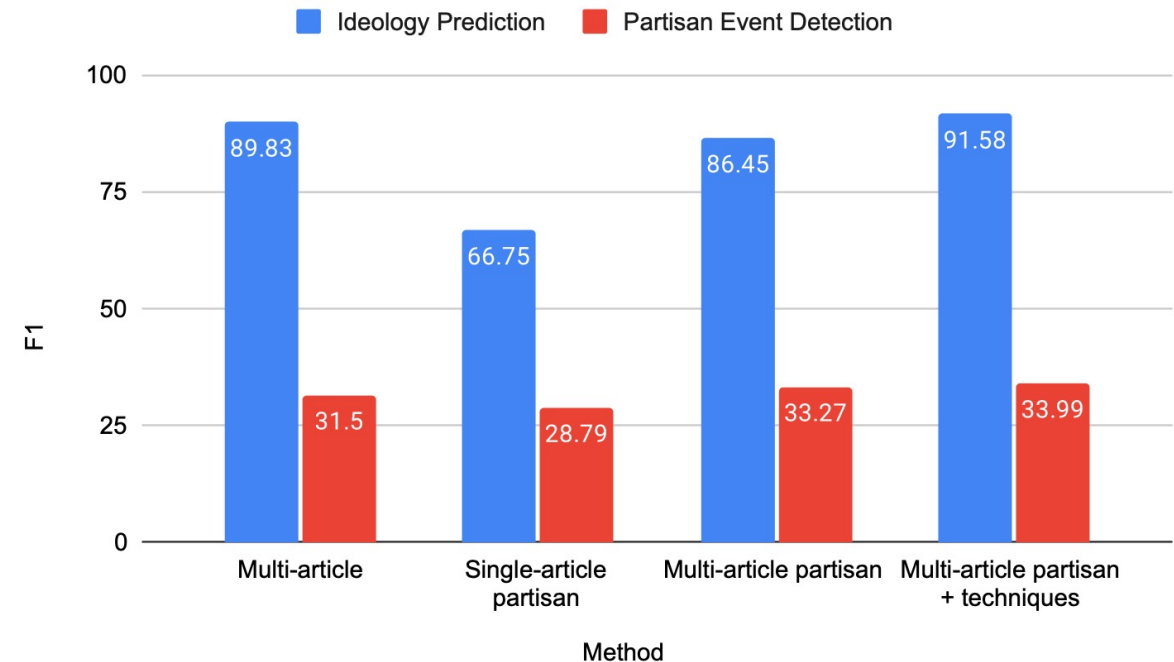
# Partisan event detection

- Cross-article content comparison is important
- Common events are less likely to be partisan



# Partisan event detection

- Cross-article content comparison is important
- Common events are less likely to be partisan
- Event modeling helps ideology prediction





This research supported by National Science Foundation (NSF) and Air Force Office of Scientific Research (AFOSR)

- Code is available at: <https://github.com/launchnlp/ATC>
- Contact: yujianliu@ucsb.edu, xlfzhang@umich.edu