



COMPUTER SCIENCE & ENGINEERING

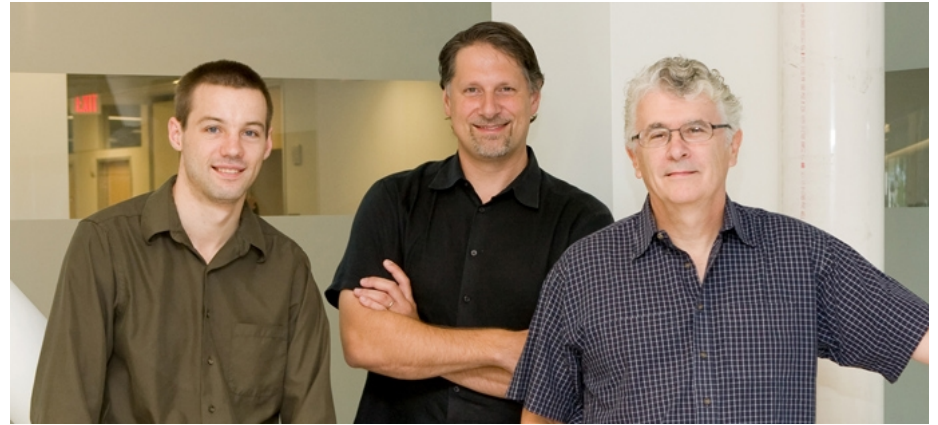
UNIVERSITY OF MICHIGAN



Graduate Students Information Webinar
March 10, 2017



Welcome to CSE @ Michigan!



Welcome to CSE @ Michigan!

- *Our Environment:*
 - Collaborative, collegial, and intellectually enriching
- *Our Research:*
 - Deep in addressing fundamental issues
 - Broad in interdisciplinary perspective
- *Our Alumni:*
 - Changing the World ...



A Growing, Active, & Accomplished Faculty

■ *74 Faculty:*

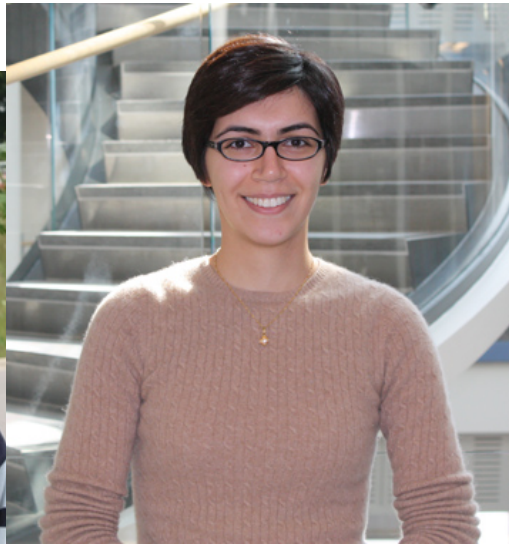
- 11 ACM Fellows, 17 IEEE Fellows, 6 AAAI Fellows, 4 AAAS Fellows, 2 SIGCHI Academy, 1 CSS Fellow, 10 Sloan Fellows, 1 MacArthur Fellow
- 37 National Science Foundation CAREER and PECASE Award winners
- Numerous ACM, IEEE and USENIX national awards

■ *17 Faculty with joint appointments in CSE:*

- Electrical Engineering, School of Information, Medical School, Math...

Your Future Colleagues

- 337 graduate students, Fall 2016
- 79 MS and PhD degrees granted last year



An Abundance of Support for Research

Expenditures of **\$25+ million** in **FY16**.

Government Sponsors:

- National Science Foundation
- National Institute of Health
- Department of Homeland Security
- Department of Defense
 - AFOSR
 - ARO
 - DARPA
 - ONR
 - TARDEC
- Department of Energy
- Department of Interior
- NASA
- National Security Agency
- State of Michigan

Industry Sponsors:

- American Heart Association
- ARM, Boeing Company
- Cisco, Ford, General Electric
- General Motors
- Global Foundries, Google,
- Hewlett Packard, IBM, Intel
- Lockheed Martin, Micron
- Microsoft, NEC
- Northrop Grumman, Oracle
- Raytheon Samsung,
- SRC, Sloan Foundation,
- Soar Technologies,
- Texas Instruments,
- Toyota, VeriSign, Yahoo!

Unique Research Ecosystem



Breadth, Depth, and an Interdisciplinary Perspective

■ *5 Laboratories:*

- Artificial Intelligence
- Computer Architecture
- Interactive Systems
- Software Systems
- Theory of Computation

■ *Areas of Research:*

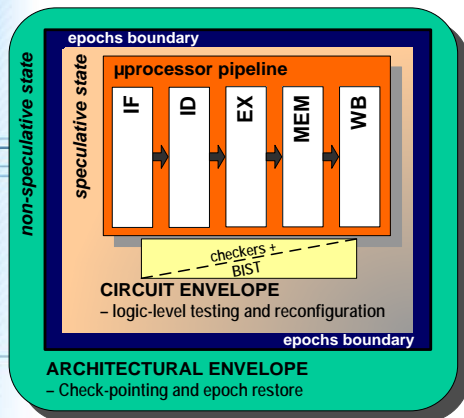
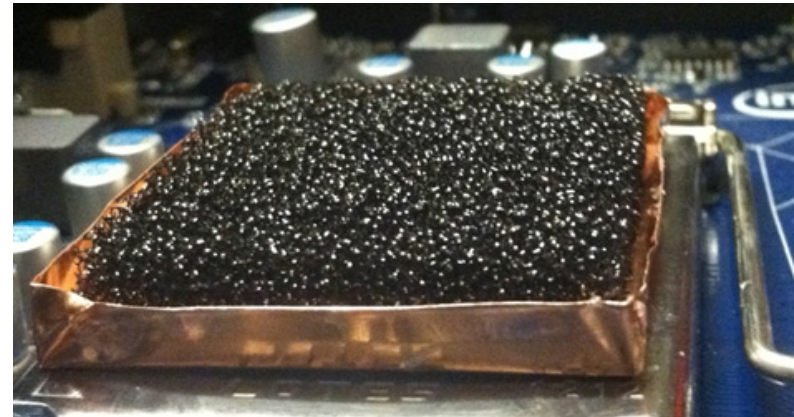
- Bioinformatics & medical
- Robust, low-power computing
- Pervasive and mobile computing
- Robotics
- Security and privacy
- Cognitive agents
- “Green” & cloud computing
- Self-healing systems
- Quantum computing
- Machine learning
- Human computer interfaces
- Socially relevant applications
- Technology in performance arts
- ...



Computer Engineering Lab

Faculty:

Austin, Bertacco, Chen, Das,
Dreslinski, Dutta, Fu, Hayes,
Mahlke, Markov, Mars, Mazumder,
Mudge, Narayanasamy,
Papaefthymiou, Sakallah, Tang,
Wenisch



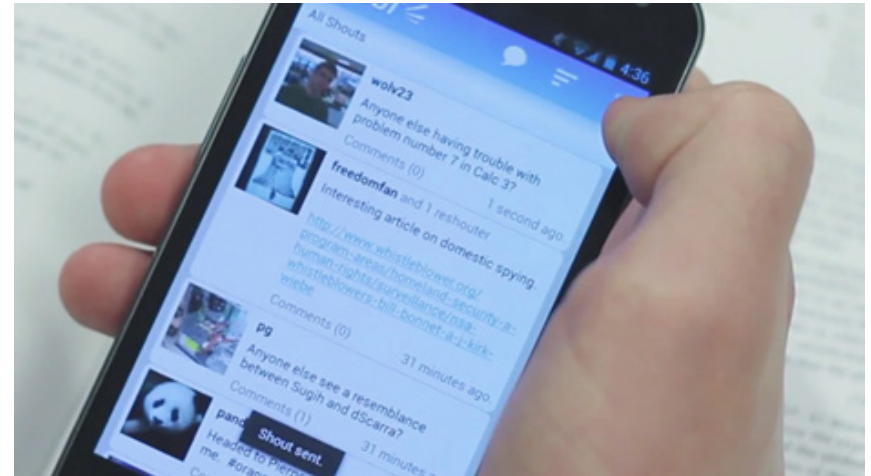
Software Systems Lab

Faculty:

Cafarella, Chen, Chesney, Chowdhury, Compton, Dutta, Flinn, Fu, Halderman, Honeyman, Jagadish, Jamin, Koutra, Lasecki, Lee, Madhyastha, Mao, Mozafari, Narayanasamy, Noble, Prakash, Shin, Stout



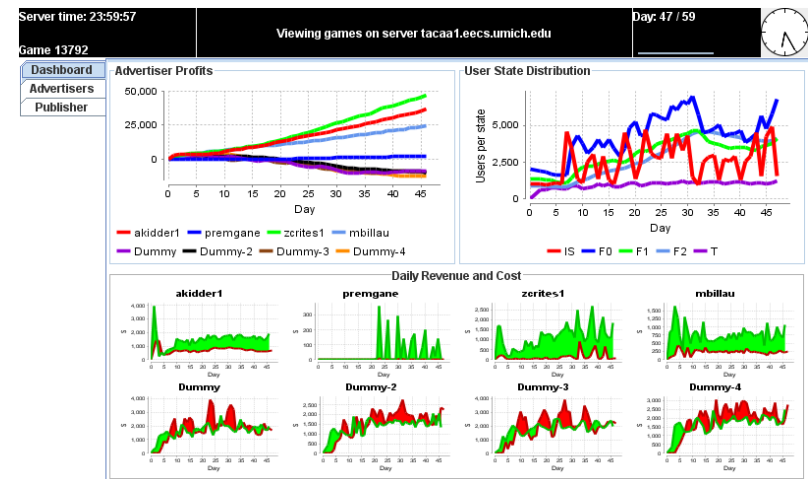
Big
Data



Artificial Intelligence Lab

Faculty:

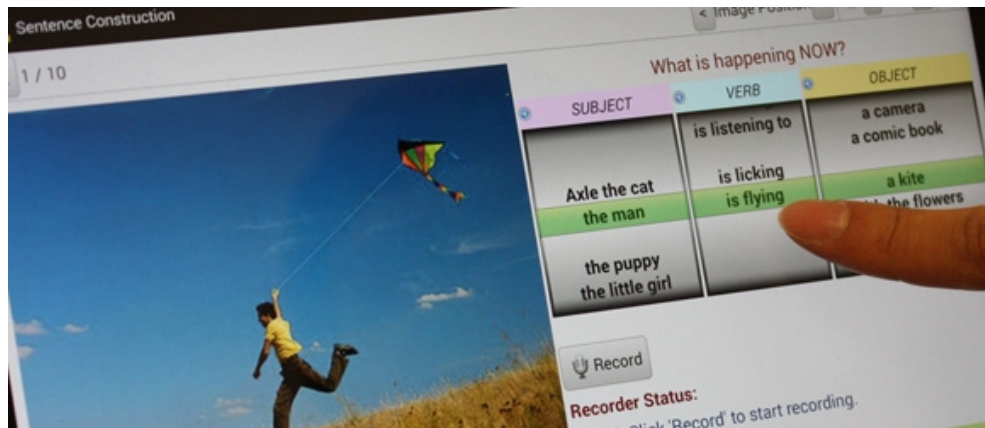
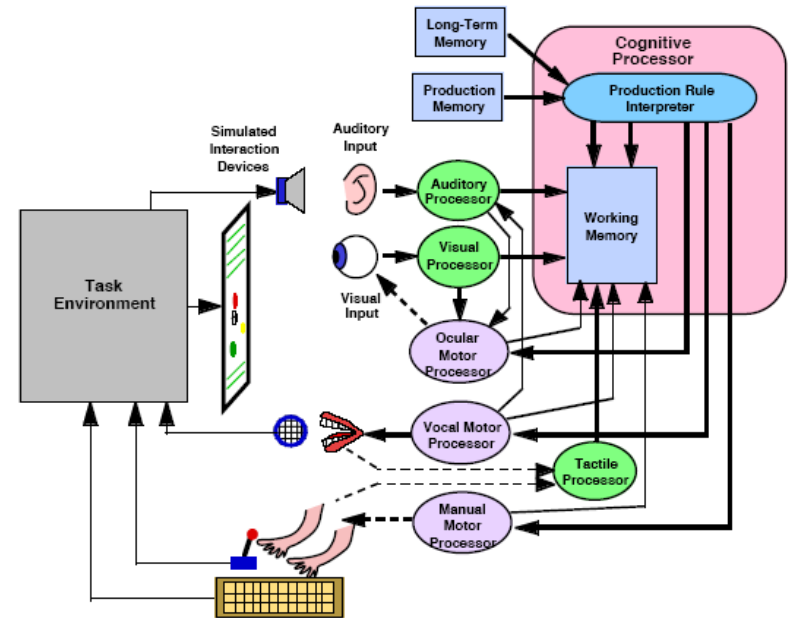
Abernethy, Baveja, Deng, Durfee, Jenkins, Koutra, Kieras, Kuipers, Laird, Lasecki, Lee, Mihalcea, Mower Provost, Olson, Radev, Syed, Wellman, Wiens



Interactive Systems Lab

Faculty:

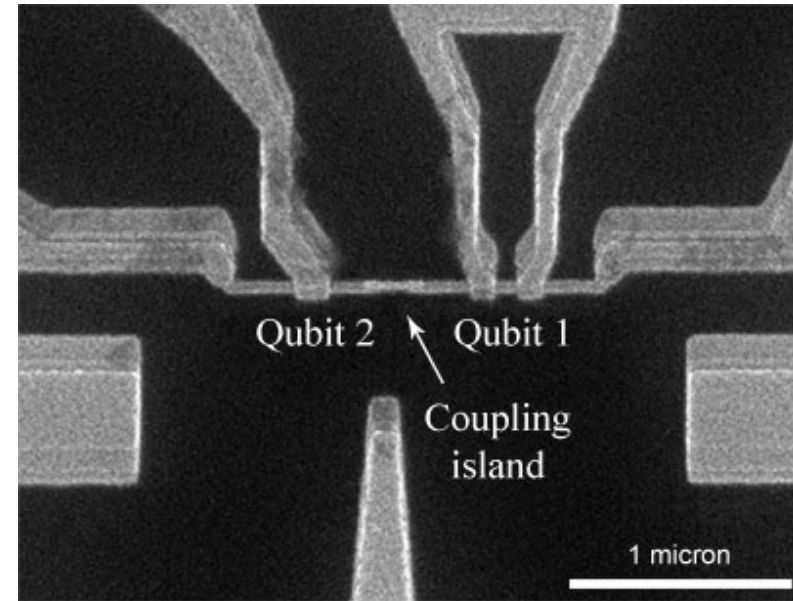
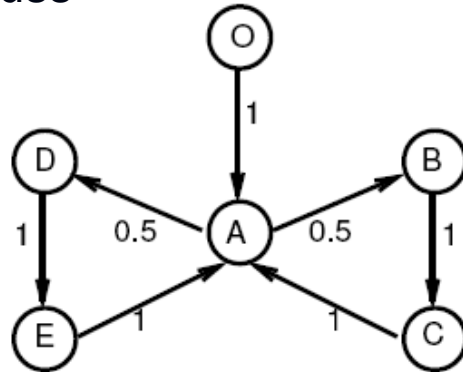
Ackerman, Adar, Essl, Kieras,
Lasecki, Mihalcea, Mower
Provost, Soloway, Wakefield



Theory of Computation Lab

Faculty:

Compton, Hayes, Miller,
Markov, Peikert, Pettie,
Schoenebeck, Shi, Stout,
Strauss



Source: NEC Research

$$\|T\|_{\diamond} = \min \left\{ \left\| \sum_t A_t^{\dagger} A_t \right\| \cdot \sqrt{\left\| \sum_t B_t^{\dagger} B_t \right\|} : A_t, B_t \in \mathbf{L}(\mathcal{N}), T = \sum_t A_t \cdot B_t^{\dagger} \right\}$$

CSE trends

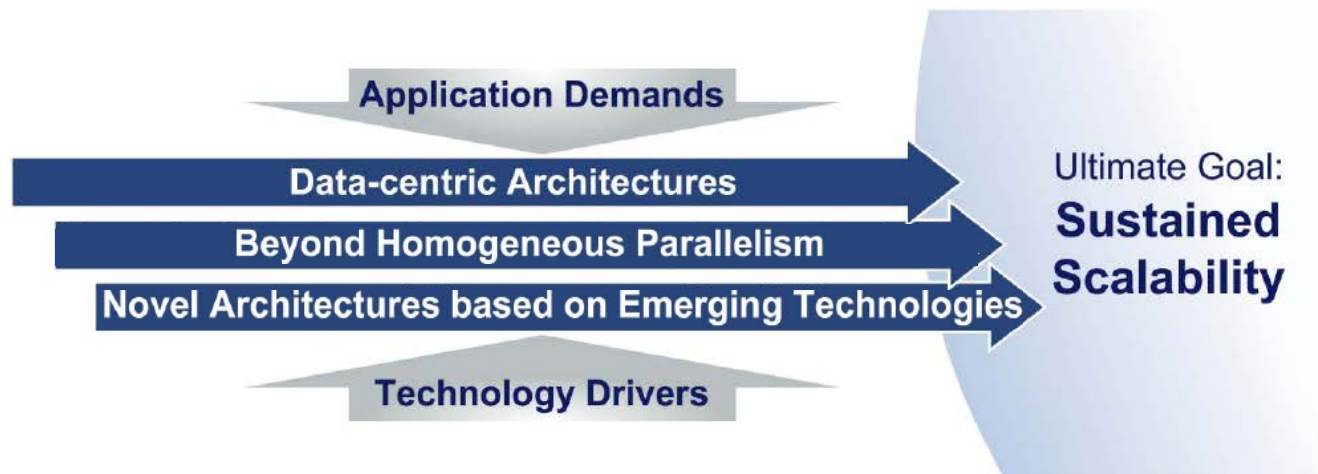
- 20 new tenure-track faculty since 2011
- Fully-funded 5-year offers to all incoming graduate students
- Student enrollment and research continues to grow



Research Centers in Computer Engineering



- **Center for Future Architectures Research**
- \$28.5M, 5-year center funded by SRC with support from DARPA
- Led by Todd Austin; investigators include Bertacco, Das, Mahlke, Narayanasamy
- Goal: To create future generation scalable computing systems



Research Centers in Computer Engineering

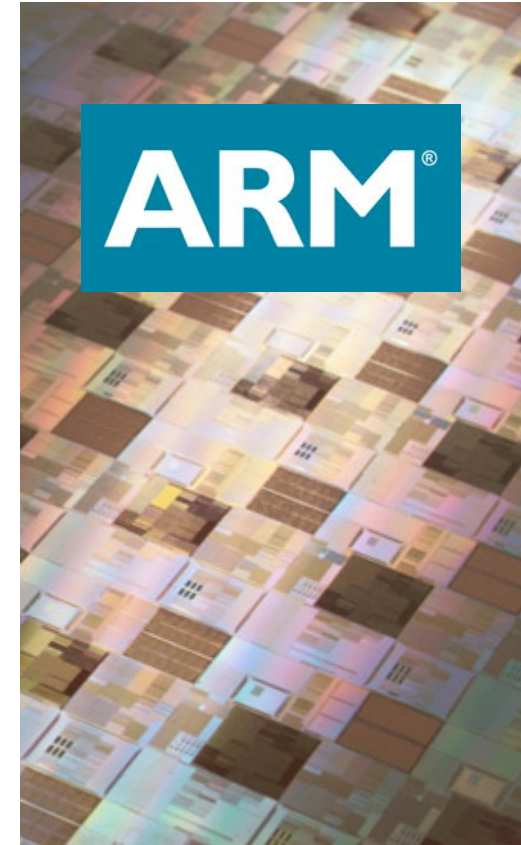
- **ARM Research Center**

- \$10M relationship over 10 years funded by ARM - has been renewed for 2 more years



- Led by Trevor Mudge; investigators include Das, Dreslinski, Mahlke, Sakallah, Sylvester, Wenisch

- Goal: To research enabling technologies for ultra-low energy and sustainable computing
- Application areas: cloud computing, wearable medical and lifestyle devices, energy-efficient trusted computing, and ubiquitous sensor networks



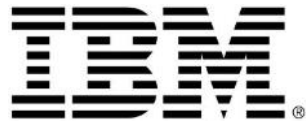
Where Do Our PhD Grads Go?

- *Faculty - Academia*



Where Do Our PhD Grads Go?

- *Industrial R&D Labs*



Where Do Our PhD Grads Go?

- *Startups*



SimpleScalar LLC



Some of Our Alumni

- Larry Page – Co-Founder of Google
- Jennifer Rexford – Professor at Princeton University
- Kunle Olukotun – Professor at Stanford University
- Rob Malan – CTO at Arbor Networks
- Thomas Knoll – Inventor of Photoshop
- Dick Costolo – CEO of Twitter
- Bob Muglia – President of Server & Tools at Microsoft
- Usama Fayyad – VP at Barclays
- Greg Joswiak – VP of iPod & iPhone Marketing at Apple
- Kevin O’Conner – Founder of DoubleClick
- Tim Howes – LoudCloud, HP, and RockMelt
- Mark Abel – Director of Solutions Architecture at Intel
- Michael Stonebraker – Professor at MIT
- Sid Meier – Creator of Civilization / Co-Founder of Firaxis
- Tony Fadell – Inventor of iPod
- Bill Joy – Co-Founder of SUN