

Unsupervised Deep Basis Pursuit: Learning Reconstructions without Ground-Truth Data

Jonathan I Tamir¹, Stella X Yu^{1,2}, and Michael Lustig¹

¹Electrical Engineering and Computer Sciences, University of California, Berkeley

²International Computer Science Institute, University of California, Berkeley

www.jtsense.com

Grant Support:

NIH grants R01EB009690, R01EB019241,
P41RR09784; Sloan Research Fellowship; Bakar
Fellowship; GE Healthcare (research support)



Declaration of Financial Interests or Relationships

Speaker Name: Jonathan I. Tamir

I have the following financial interest or relationship(s) to disclose with regard to the subject matter of this presentation:

- Grant/research support: GE Healthcare
- Employment: Subtle Medical
- Ownership Interest: Subtle Medical

Motivation

Deep learning + iterative optimization = **Best of Both Worlds**

$$\min_{\mathbf{x}} \frac{1}{2} \|\mathbf{y} - \mathbf{A}\mathbf{x}\|_2 + Q(\mathbf{x})$$

MoDL¹:

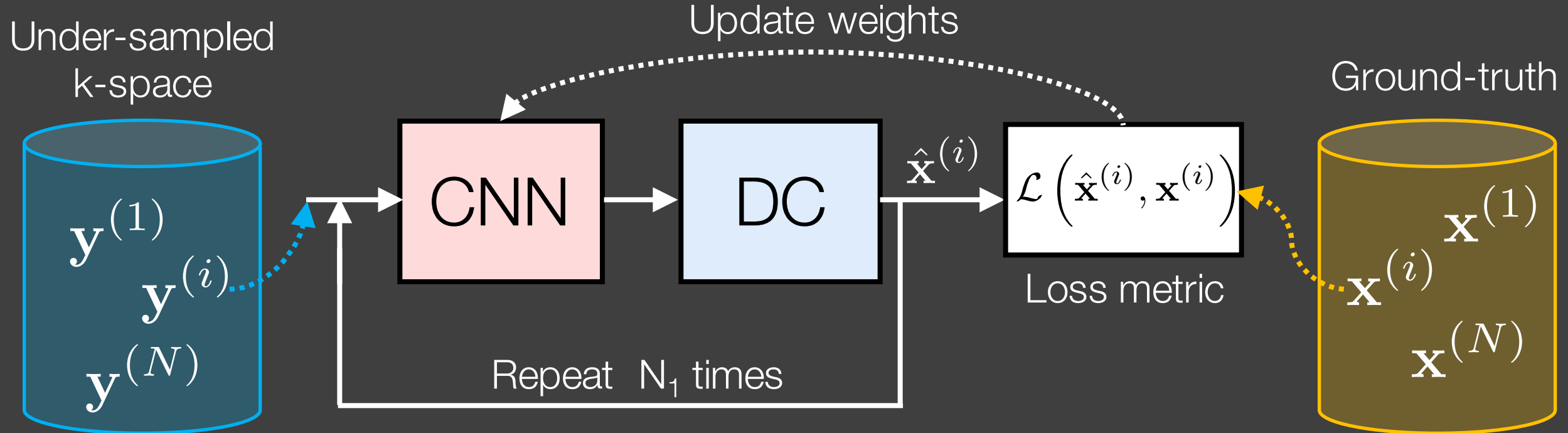
$$Q(\mathbf{x}) = \lambda \|\mathbf{x} - \mathcal{R}_{\mathbf{w}}(\mathbf{x})\|_2^2$$

CNN regularization
with weights \mathbf{w}

[1] S Diamond, arXiv, 2017. [2] J Schlemper, IPMI, 2017. [3] K Hammemik, MRM 2017. [4] J Zhang, CVPR 2018. [5] Aggarwal, IEEE TMI 2019.

Motivation

Deep learning + iterative optimization = **Best of Both Worlds**

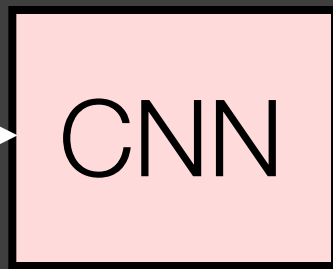
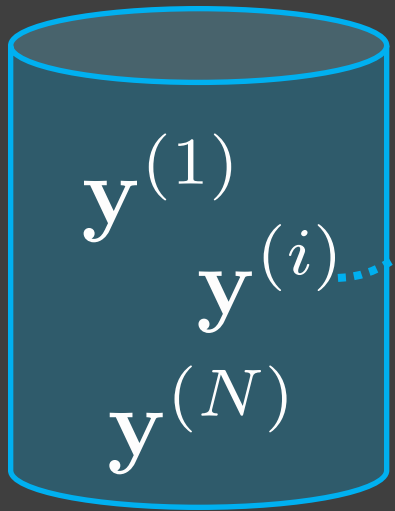


[1] S Diamond, arXiv, 2017. [2] J Schlemper, IPMI, 2017. [3] K Hammemik, MRM 2017. [4] J Zhang, CVPR 2018. [5] HK Aggarwal, IEEE TMI 2019.

Challenge

What to do when there is **no ground-truth data**?

Under-sampled
k-space

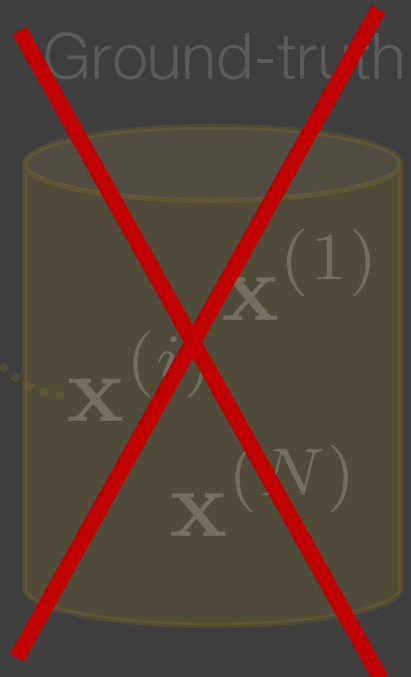


$\hat{x}^{(i)}$



Loss metric

Repeat N_1 times



Challenge

What to do when there is **no ground-truth data**?

Noise2Noise¹

CNN with SURE^{2,3}

Deep Image Prior^{4,5}

Convolutional sparse coding⁶

...

...

$$\min_{\mathbf{w}} \|\mathbf{y} - \mathbf{A}G_{\mathbf{w}}(\mathbf{z})\|_2$$

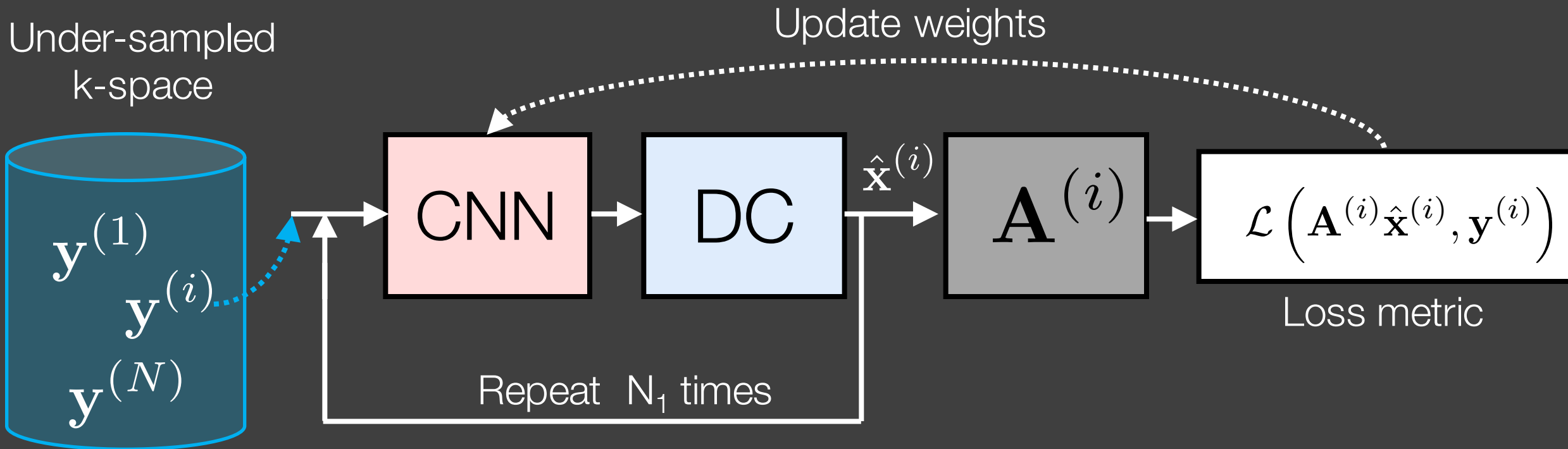
Generator network
random vector \mathbf{z}

Goal

Learn network parameters **directly from under-sampled data**

Approach

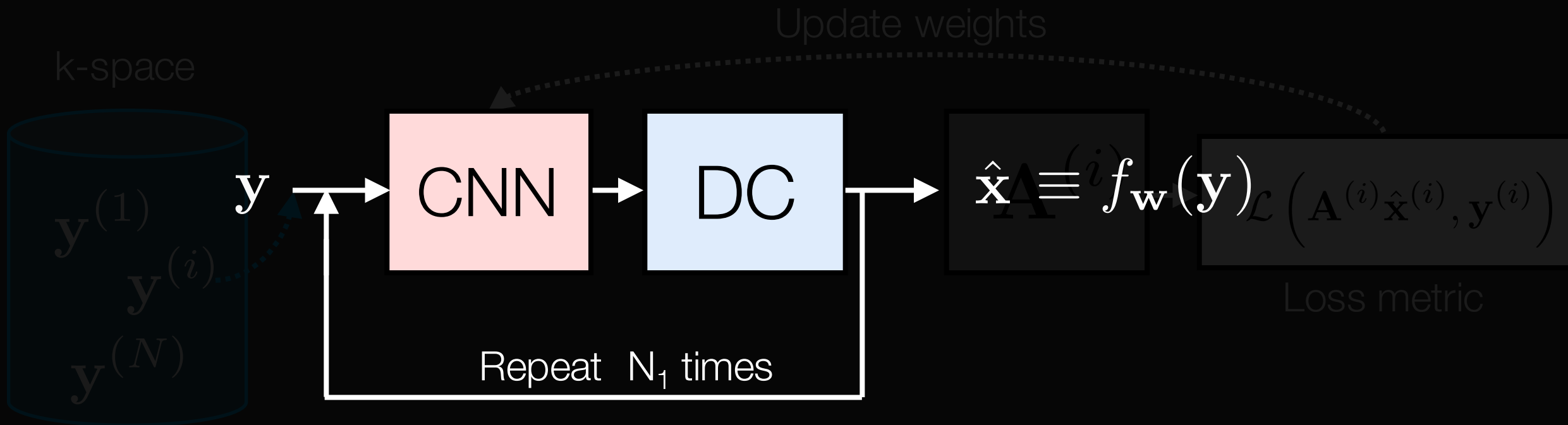
Impose loss directly on measured data^{1,2}



[1] D Van Veen, arXiv 2018. [2] F Ong, ISMRM 2018

Approach

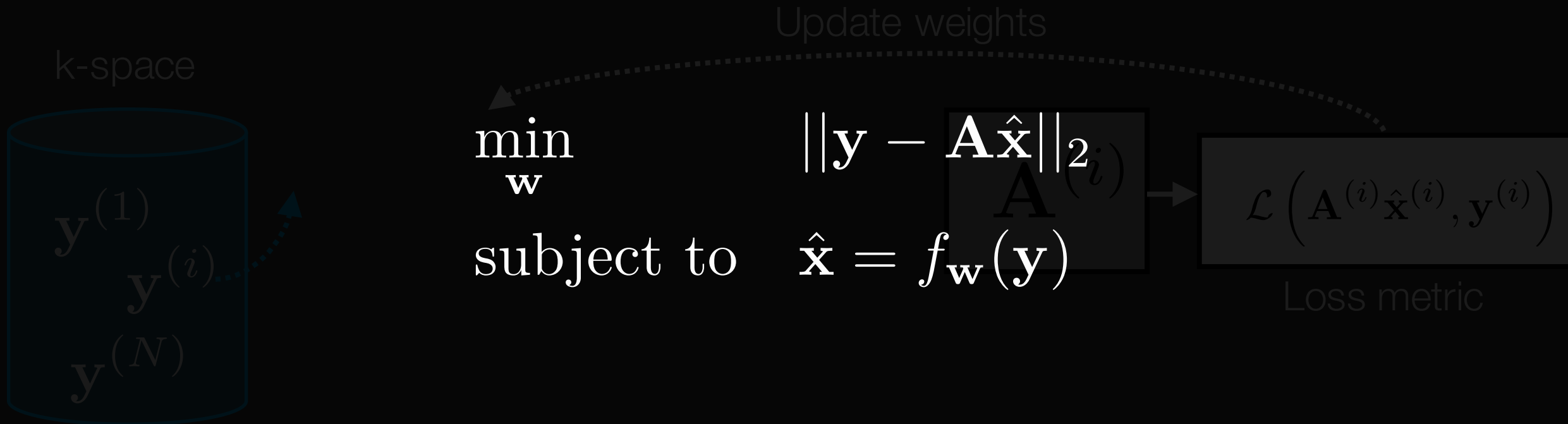
Impose loss directly on measured data^{1,2}



[1] D Van Veen, arXiv 2018. [2] F Ong, ISMRM 2018

Approach

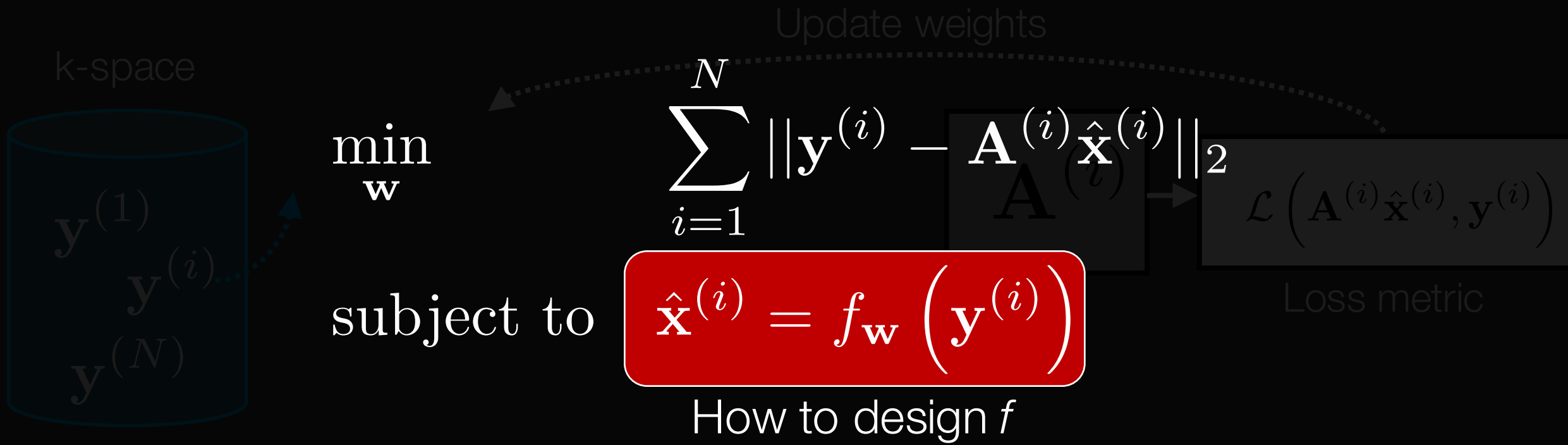
Impose loss directly on measured data^{1,2}



[1] D Van Veen, arXiv 2018. [2] F Ong, ISMRM 2018

Approach

Training on N data sets



[1] D Van Veen, arXiv 2018. [2] F Ong, ISMRM 2018

Deep Basis Pursuit (DBP)

- Combine MoDL¹ regularization with basis pursuit denoising²

$$\min_{\mathbf{x}} \quad \frac{1}{2} \|\mathcal{N}_{\mathbf{w}}(\mathbf{x})\|_2^2$$

subject to $\|\mathbf{y} - \mathbf{A}\mathbf{x}\|_2 \leq \epsilon$

$f_{\mathbf{w}}(\mathbf{y})$

$\mathcal{N}_{\mathbf{w}}(\mathbf{x}) = \mathbf{x} - \mathcal{R}_{\mathbf{w}}(\mathbf{x})$

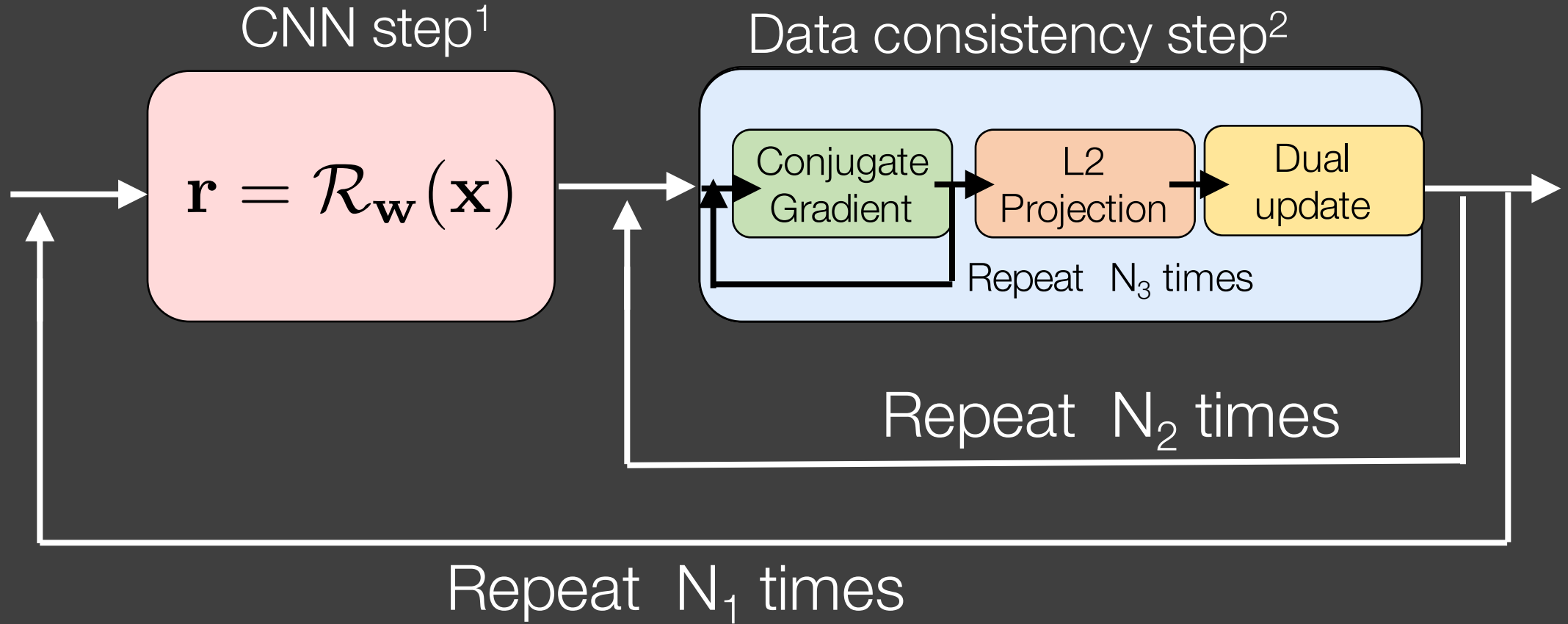
Estimates noise and aliasing

Known noise level

[1] HK Aggarwal, IEEE TMI 2019. [2] S Chen, Stanford technical report.

DBP: Alternating minimization

$$\begin{array}{ll} \min_{\mathbf{x}} & \frac{1}{2} \|\mathbf{x} - \mathcal{R}_{\mathbf{w}}(\mathbf{x})\|_2^2 \\ \text{subject to} & \|\mathbf{y} - \mathbf{A}\mathbf{x}\|_2 \leq \epsilon \end{array}$$



[1] HK Aggarwall, IEEE TMI 2019. [2] Boyd, FTML 2011.

Methods

Data:

- Train on 4,384 2D slices from 16 3D FSE knee scans (mridata.org)
- Validation: 2 separate scans. Test: 2 separate scans (548 slices each)
- Average 7 slices to act as noise-free ground-truth
- Apply retrospective Poisson disc¹ sampling and add noise

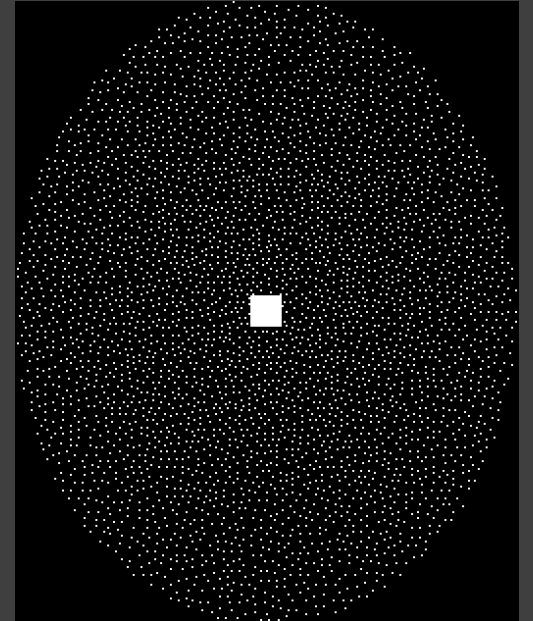
Network:

- 5 unrolls, 2 ADMM iterations, 6 Conjugate Gradient iterations
- Denoising CNN with UNet² (2ch real/imaginary)
- Train with Adam optimizer

Evaluation:

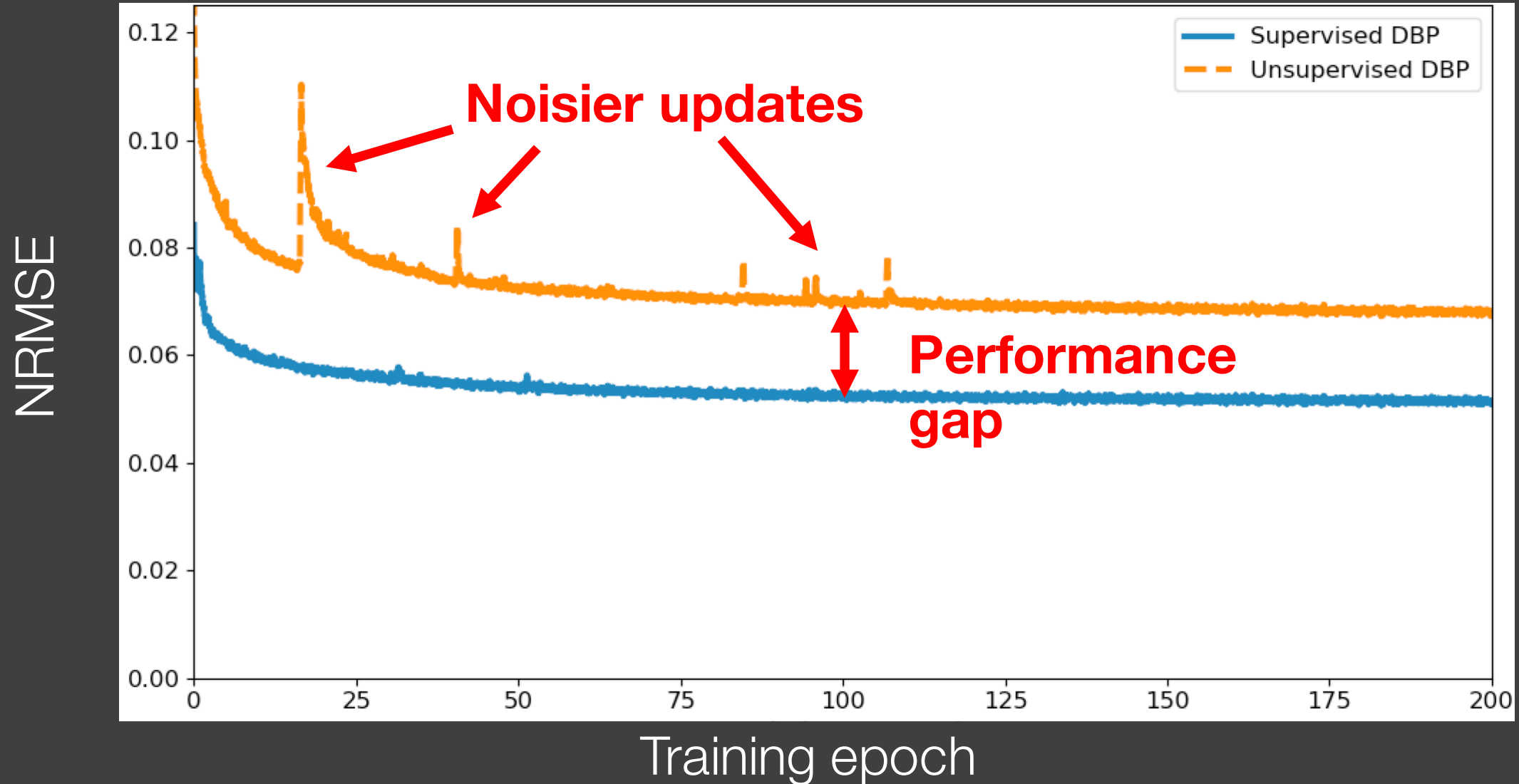
- DBP with and without ground-truth, MoDL with ground-truth, PICS³ (l1-wavelet)

Sampling pattern



[1] M Lustig, MRM 2007. [2] O Ronneberger, MICCAI 2015. [3] M Uecker, BART v0.4.04.

NRMSE vs. training epoch



Test slice

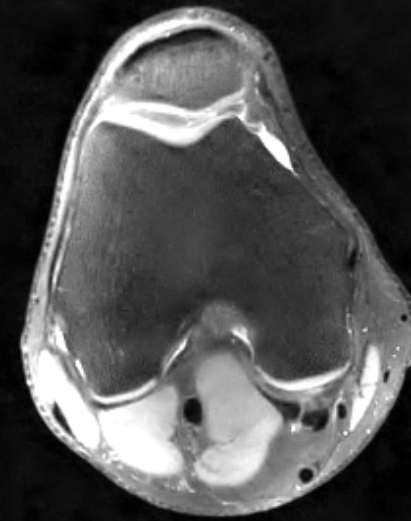
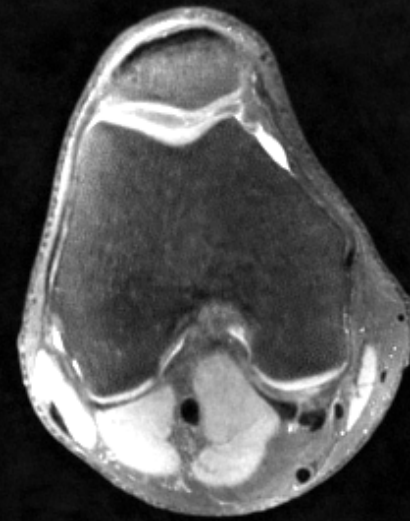
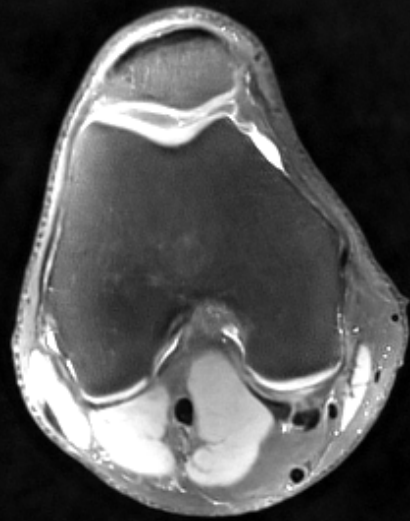
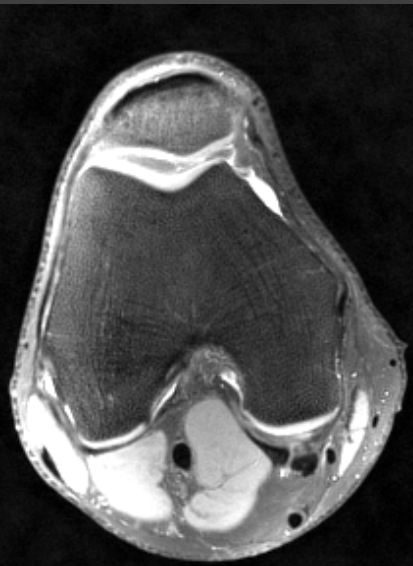
Ground truth

MoDL

Supervised
DBP

Unsupervised
DBP

PICS



NRMSE:

0.091369

0.067340

0.090781

0.076315

5 unrolls at training
5 unrolls at inference

Test slice

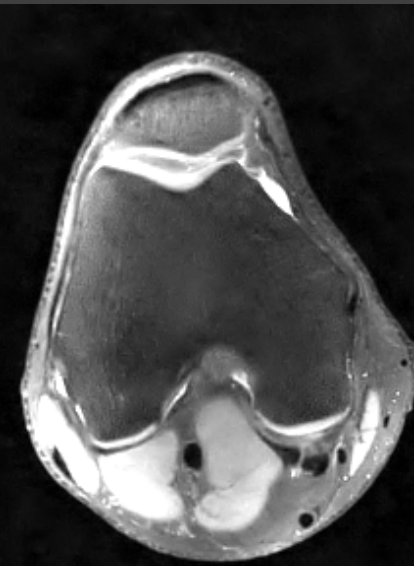
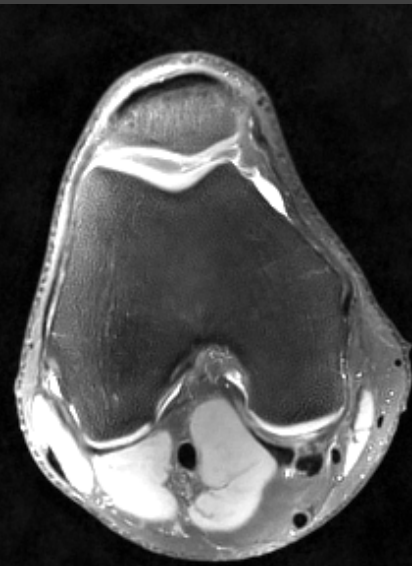
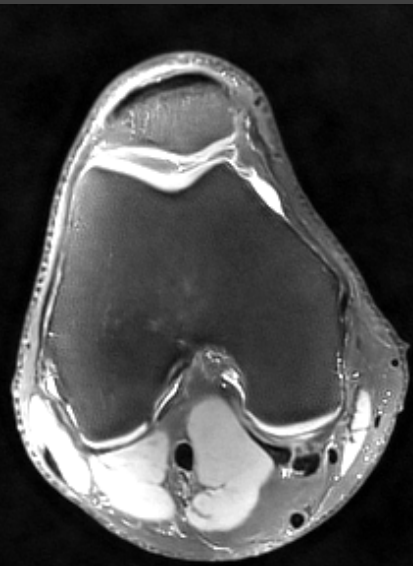
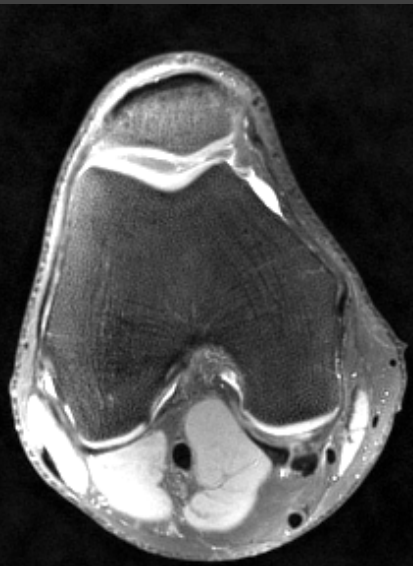
Ground truth

MoDL

Supervised
DBP

Unsupervised
DBP

PICS



NRMSE:

0.095818 ↑

0.060486 ↓

0.072552 ↓

0.076315

5 unrolls at training
8 unrolls at inference

Test slice

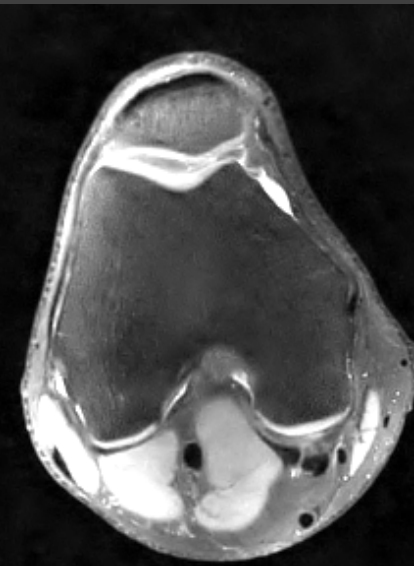
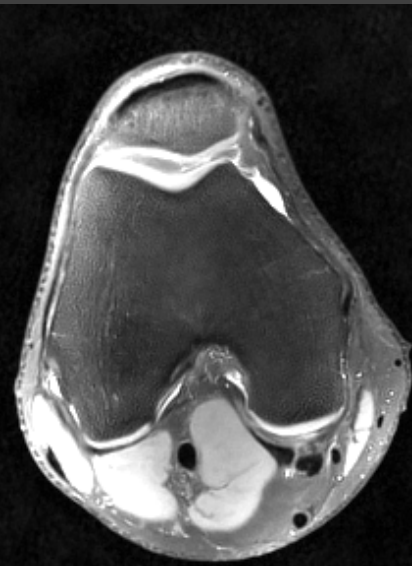
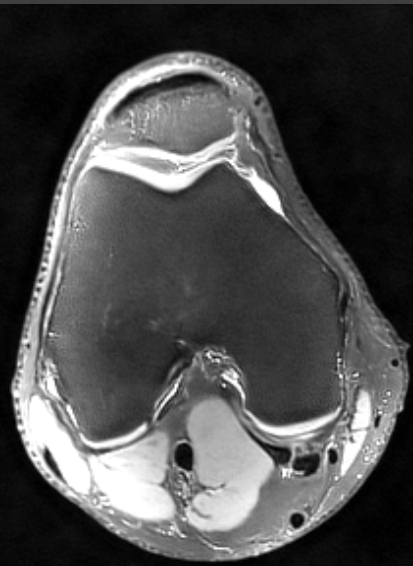
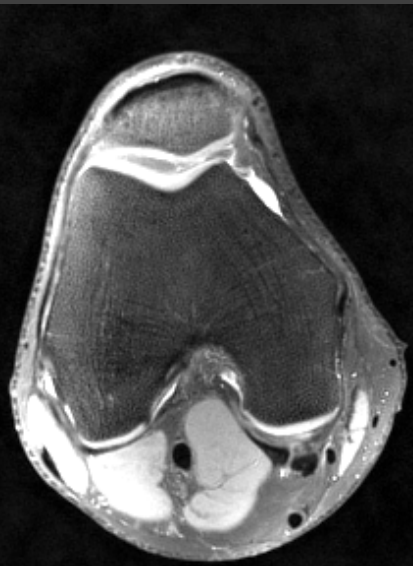
Ground truth

MoDL

Supervised
DBP

Unsupervised
DBP

PICS



NRMSE:

0.113256 ↑

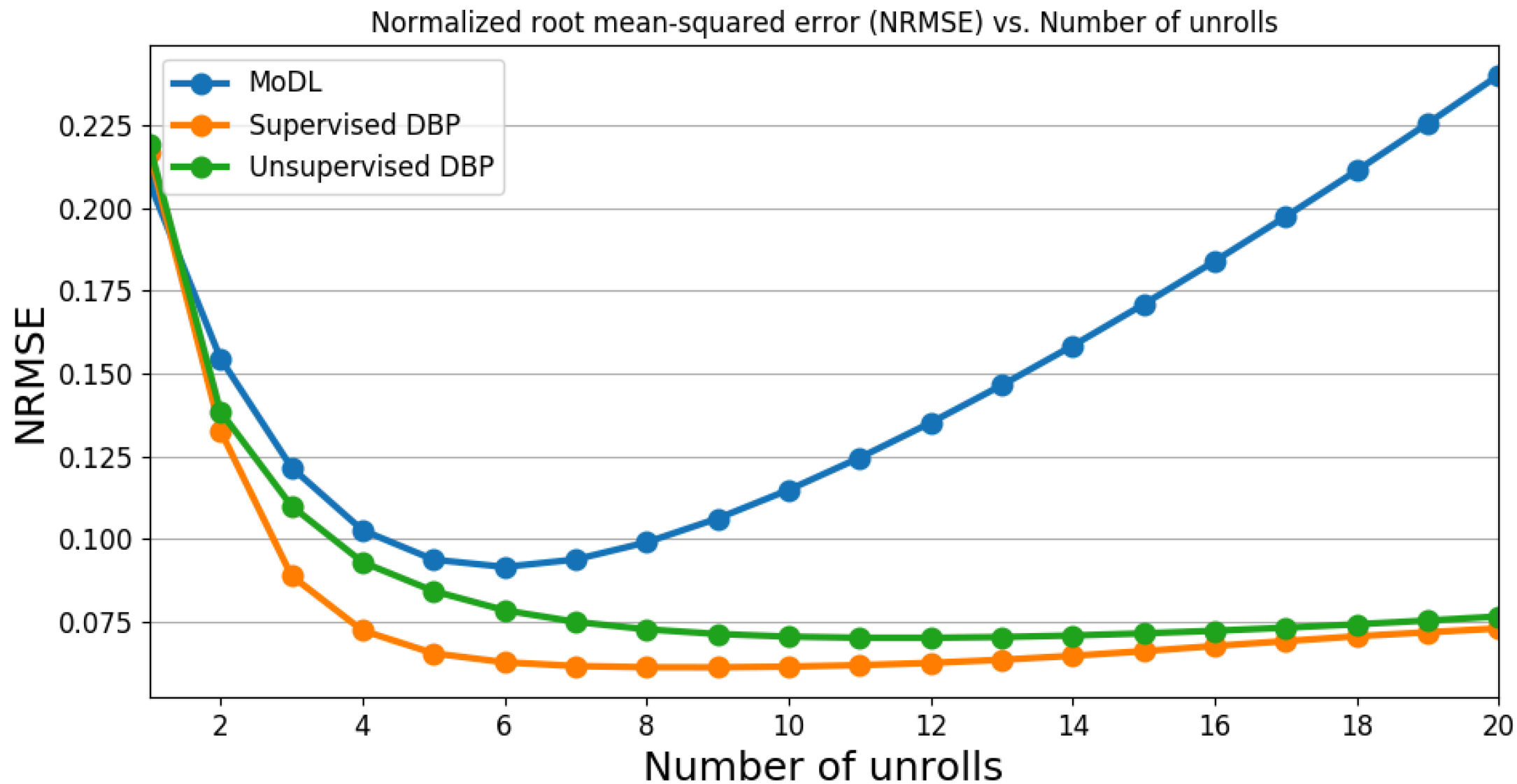
0.067340 ↑

0.068922 ↓

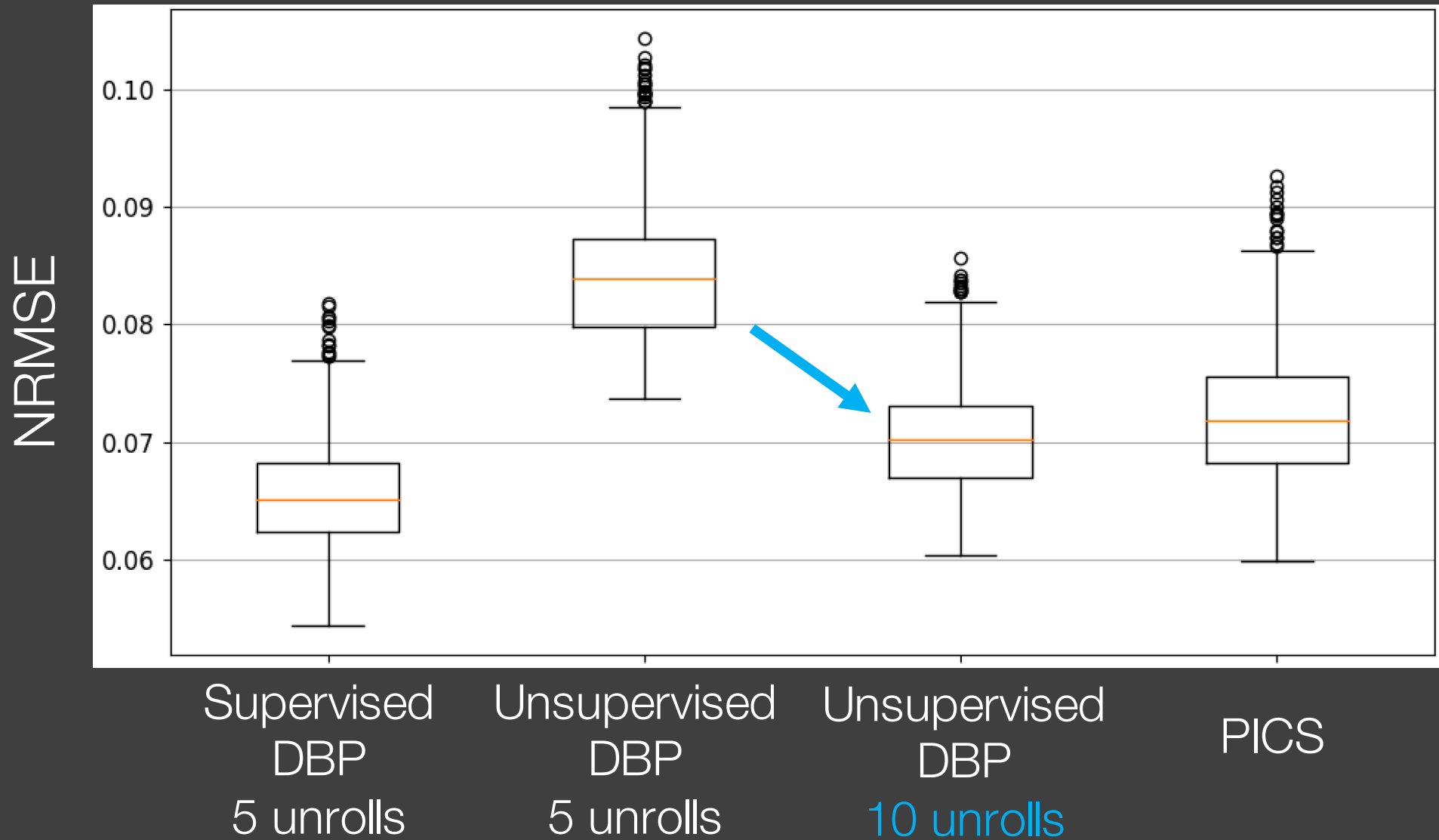
0.076315

5 unrolls at training
10 unrolls at inference

Test set error



NRMSE on test set



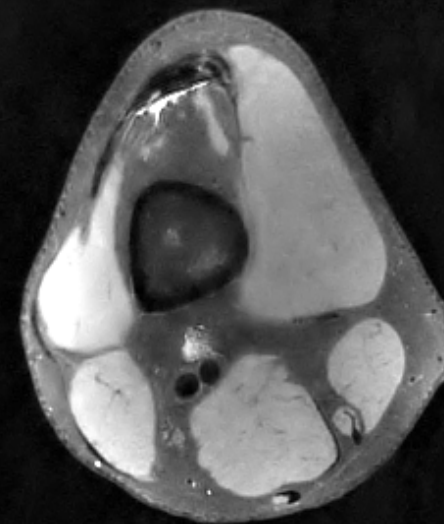
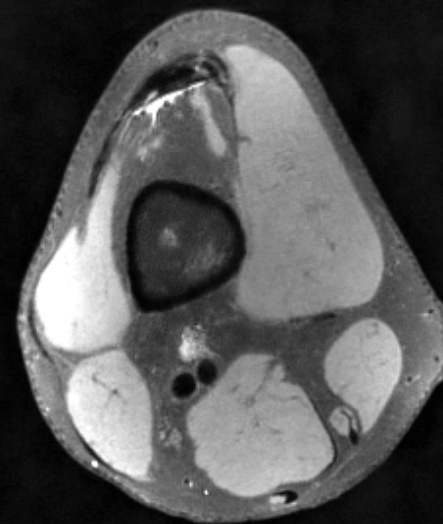
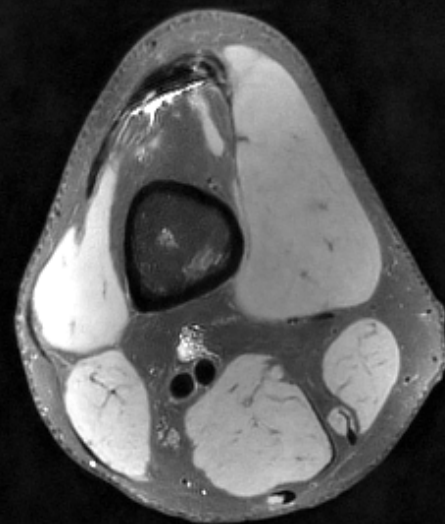
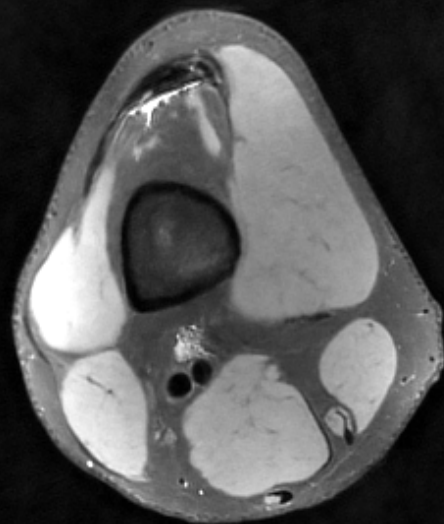
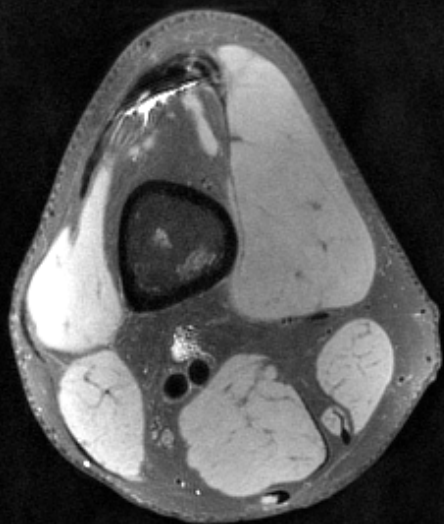
Ground truth

MoDL

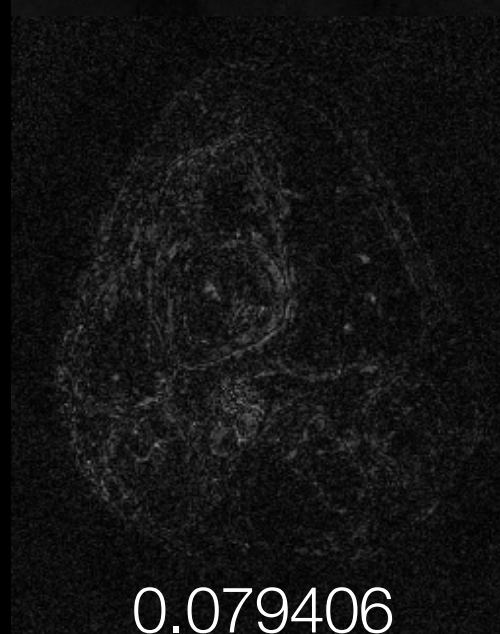
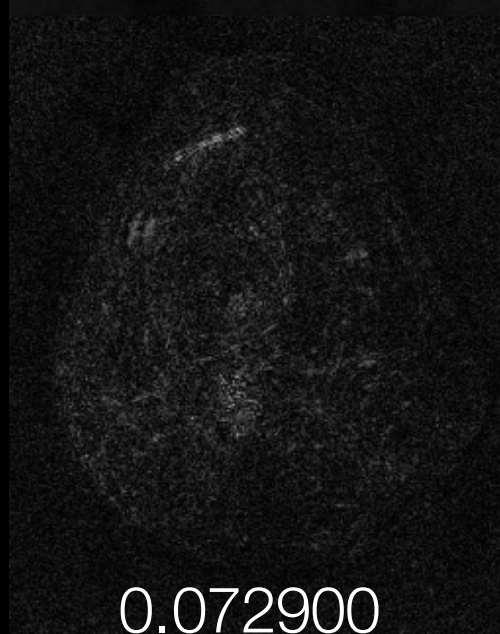
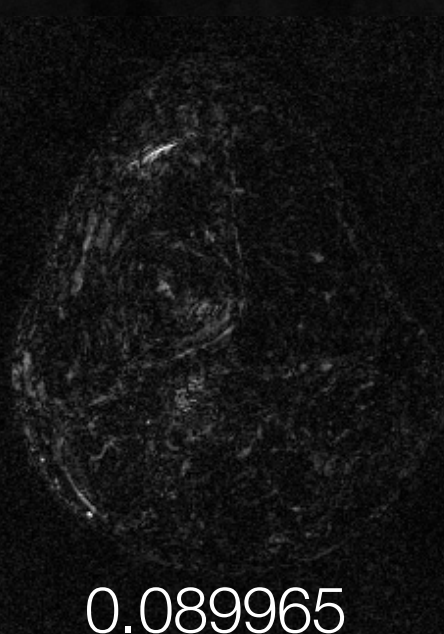
Supervised DBP

Unsupervised DBP

PICS



Abs Error



NRMSE:

0.089965

0.060977

0.072900

0.079406

Test slice

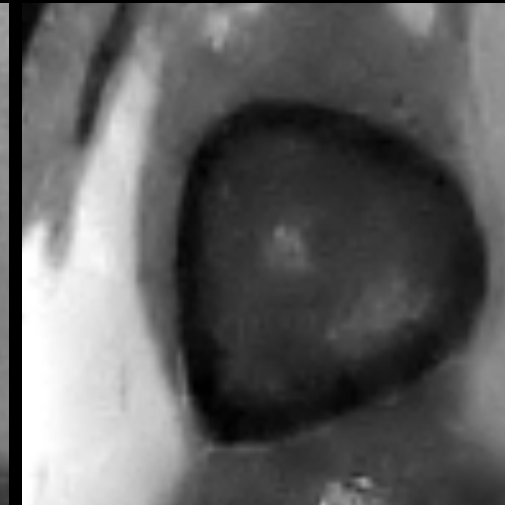
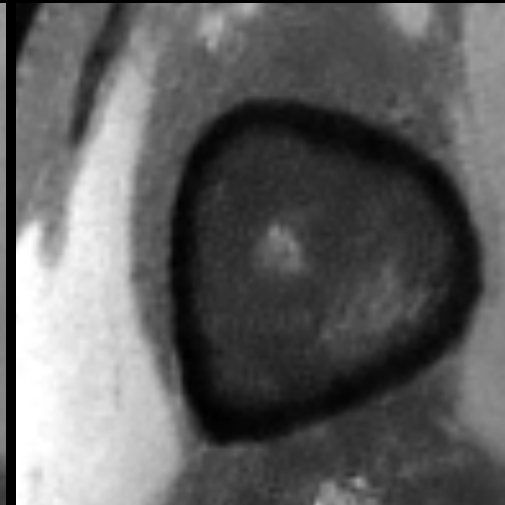
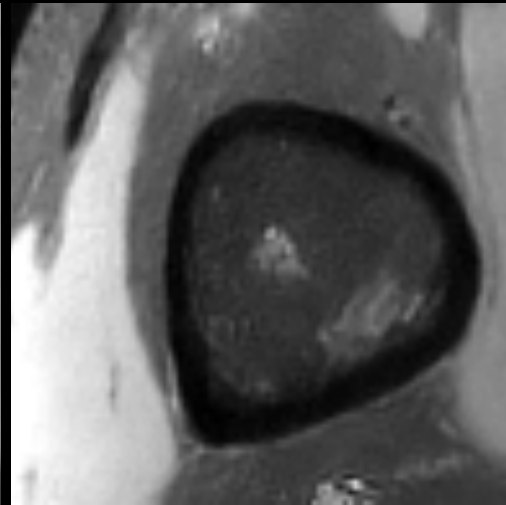
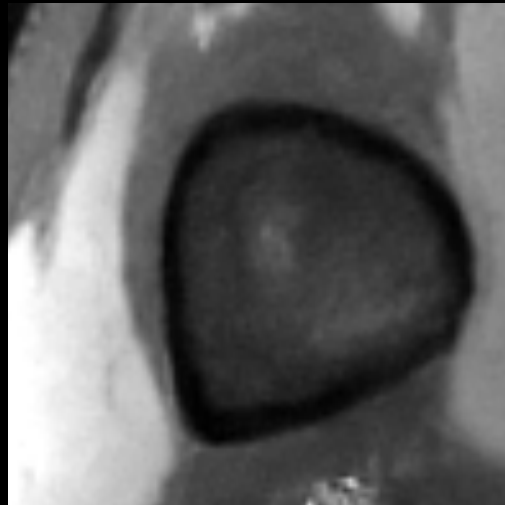
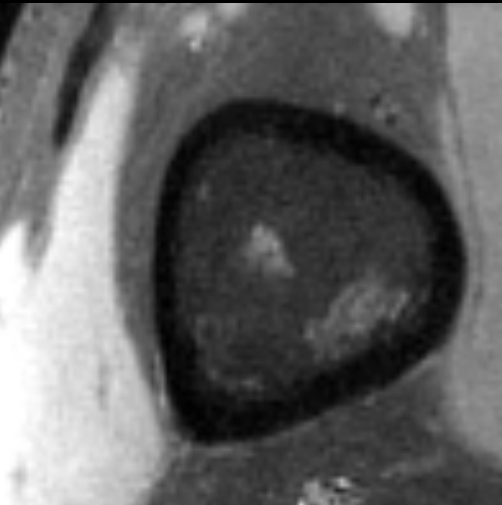
Ground truth

MoDL

Supervised
DBP

Unsupervised
DBP

PICS



NRMSE:

0.089965

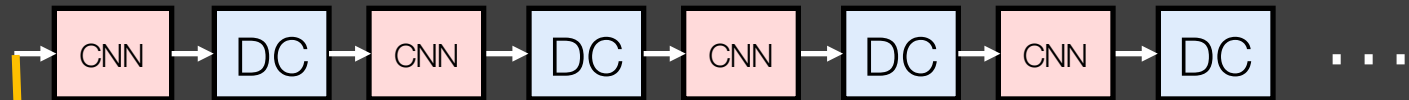
0.060977

0.072900

0.079406

Iteration progress

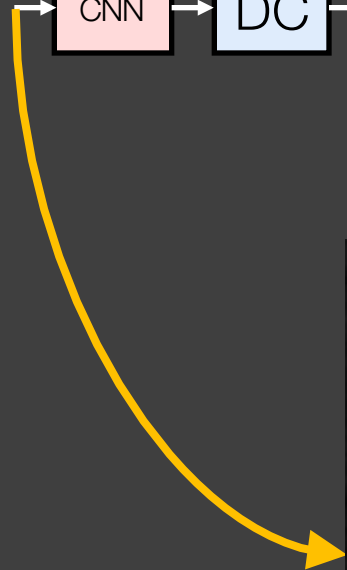
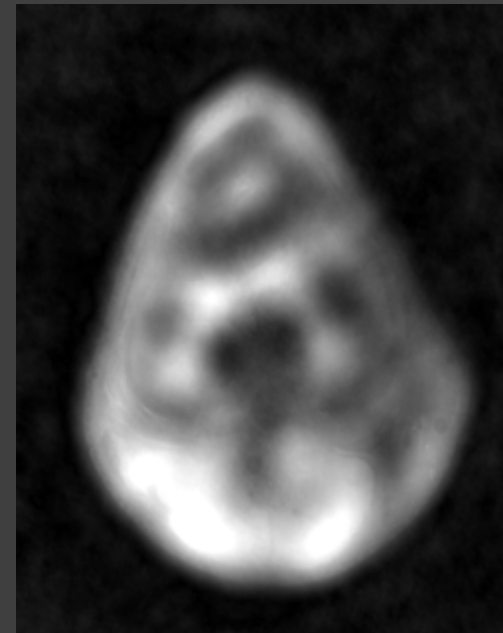
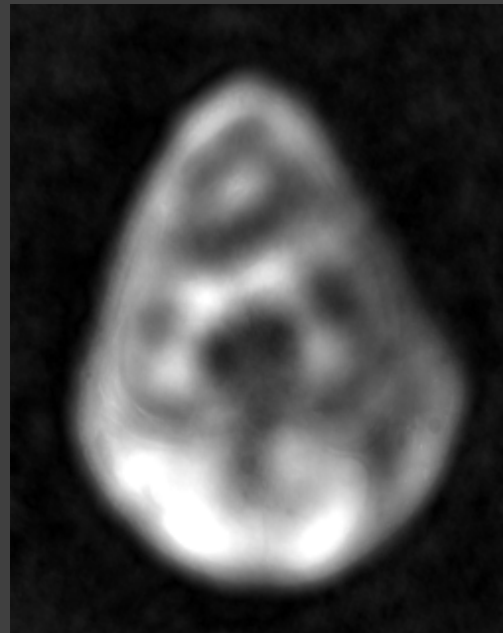
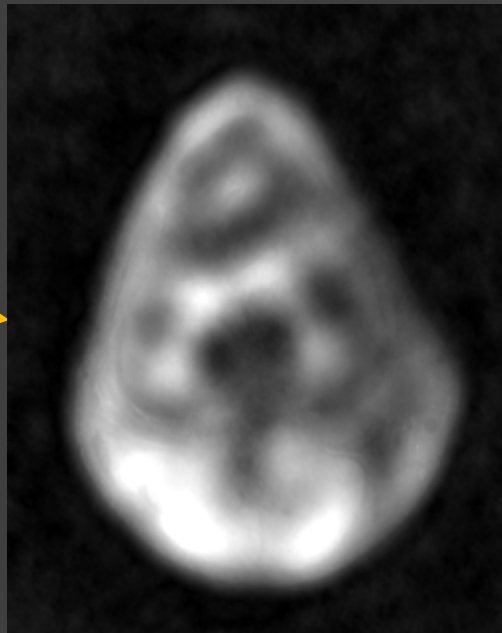
$$A^*y$$



MoDL

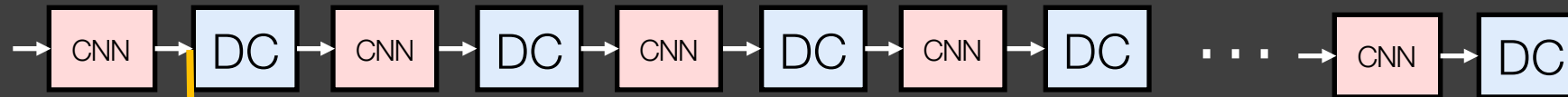
Supervised DBP

Unsupervised DBP

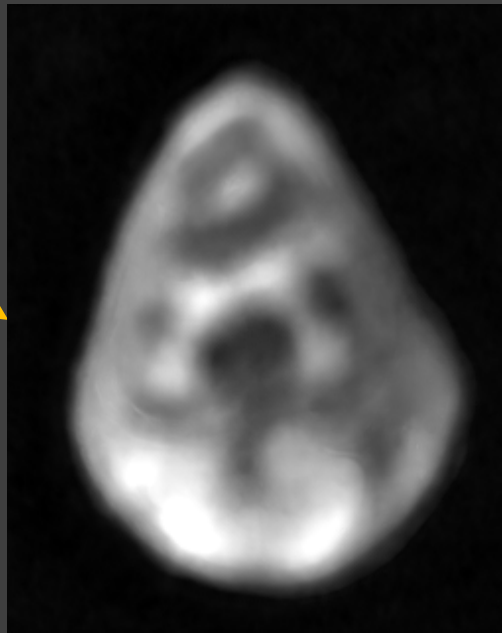


Iteration progress

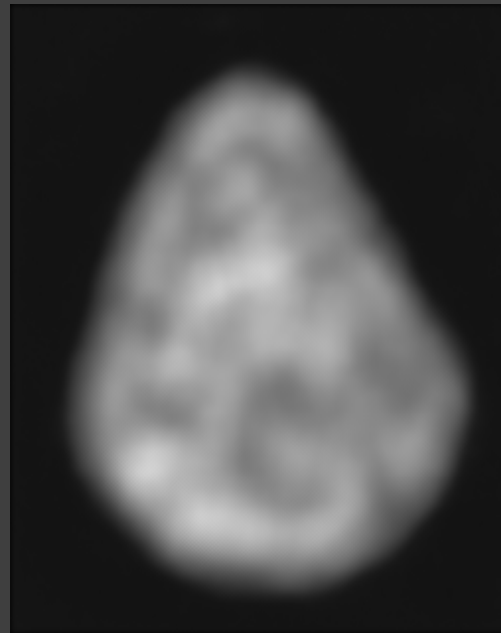
CNN 1



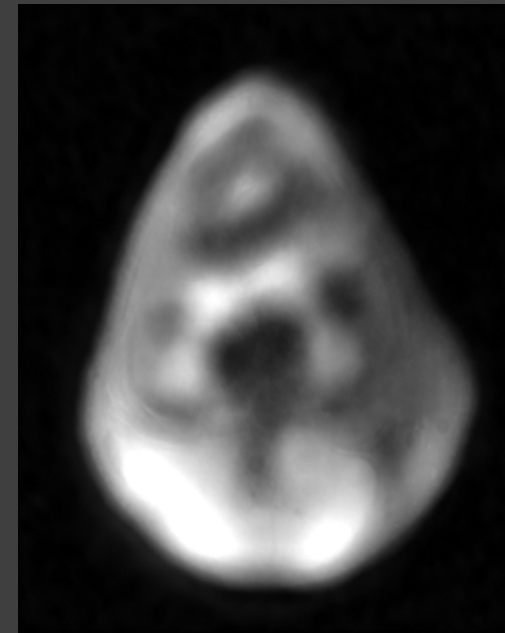
MoDL



Supervised DBP

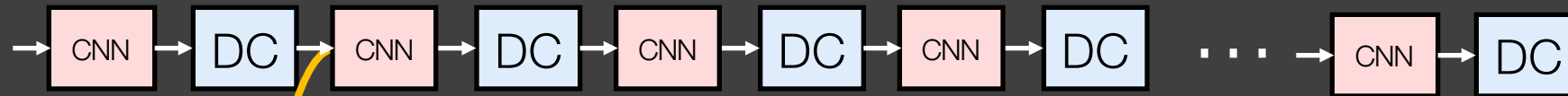


Unsupervised DBP

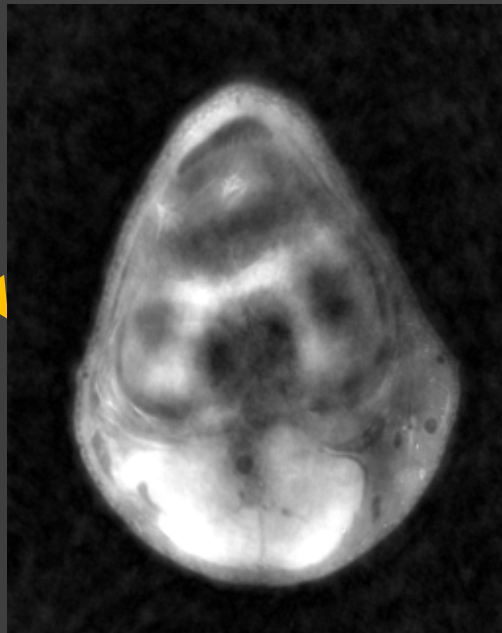


Iteration progress

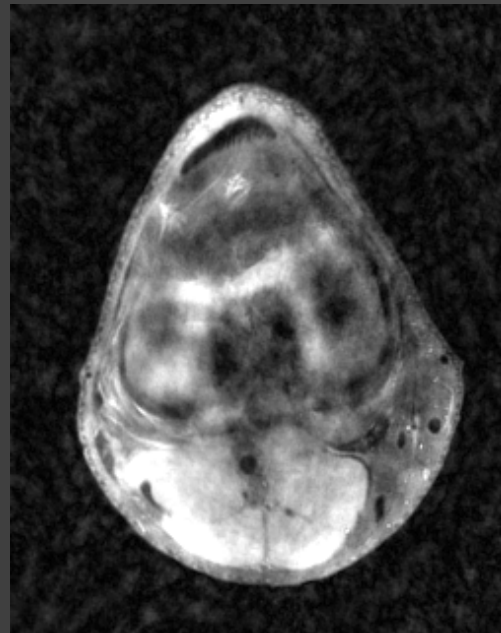
DC 1



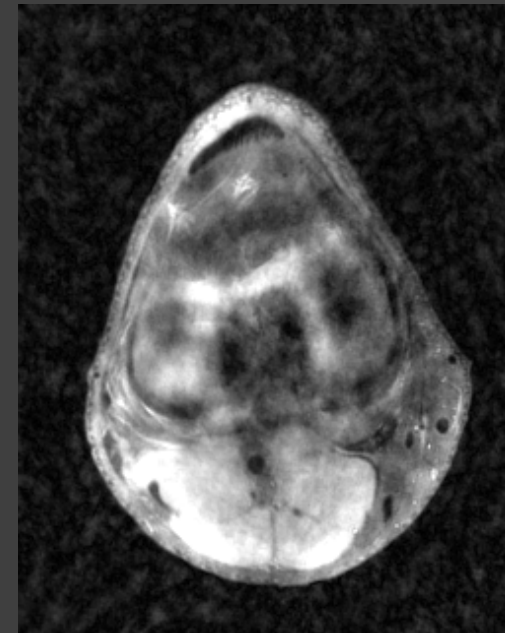
MoDL



Supervised DBP

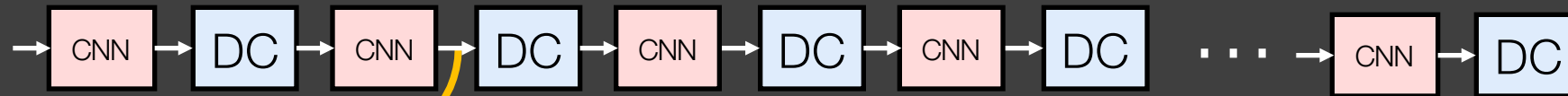


Unsupervised DBP

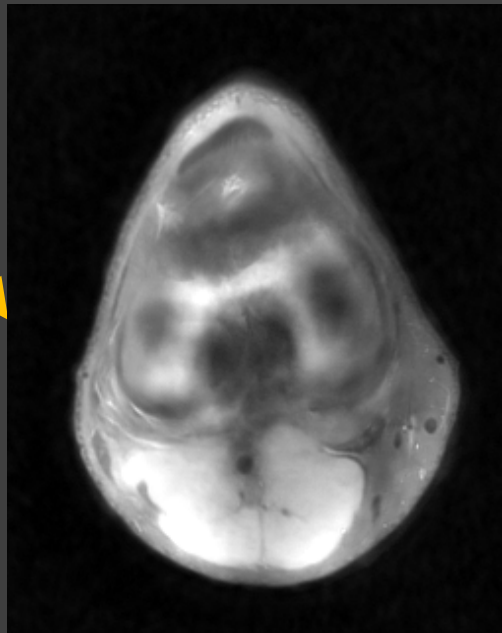


Iteration progress

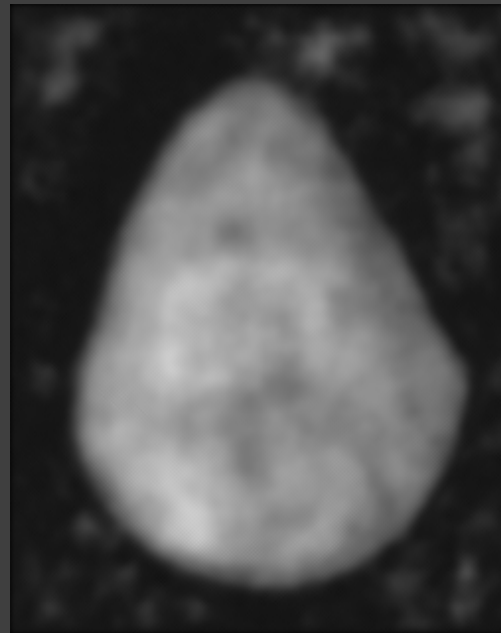
CNN 2



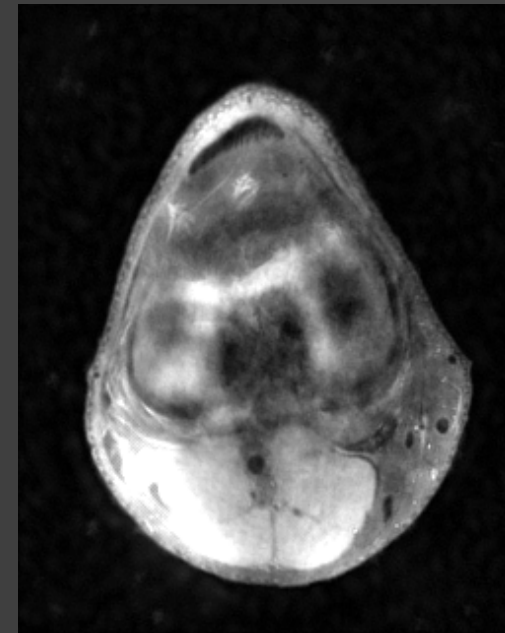
MoDL



Supervised DBP

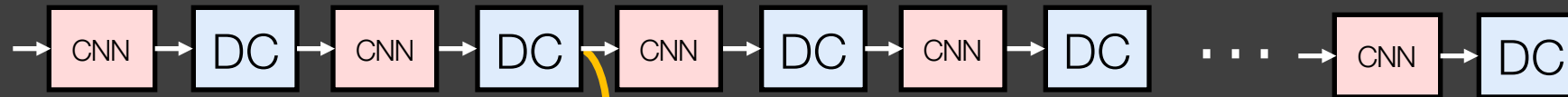


Unsupervised DBP



Iteration progress

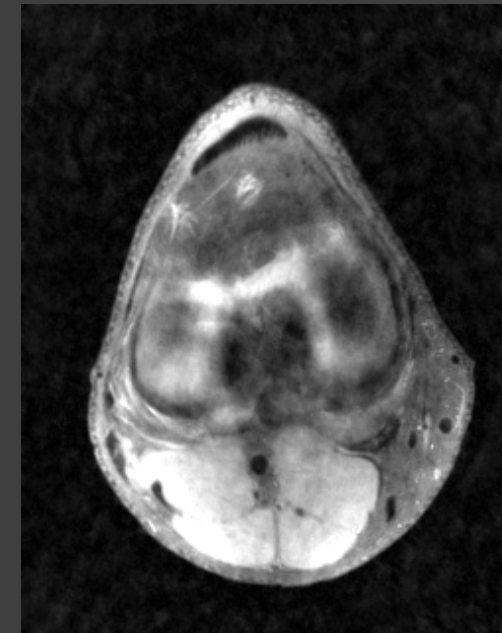
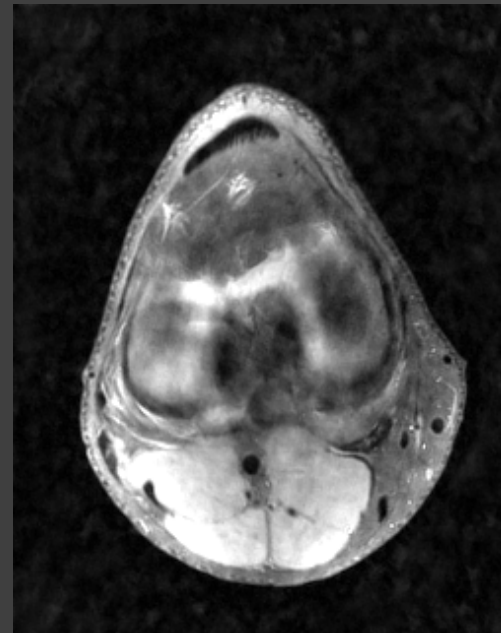
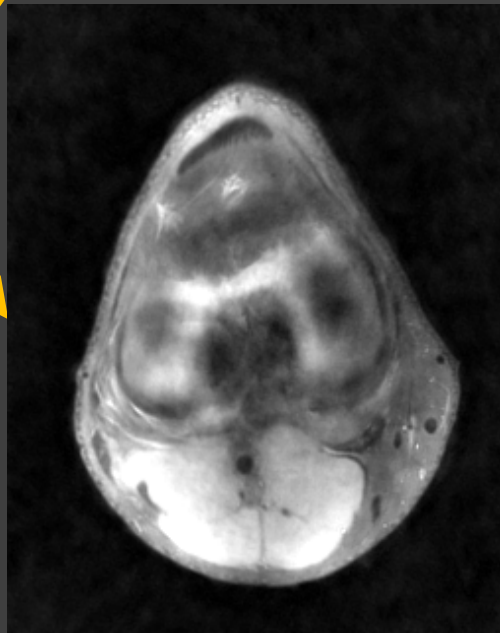
DC 2



MoDL

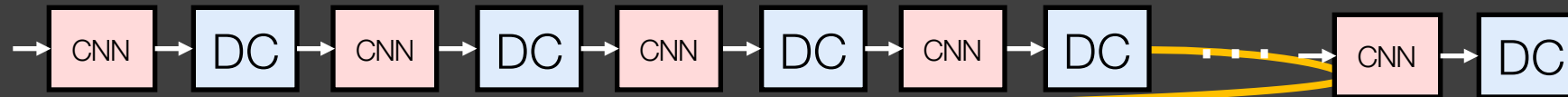
Supervised DBP

Unsupervised DBP

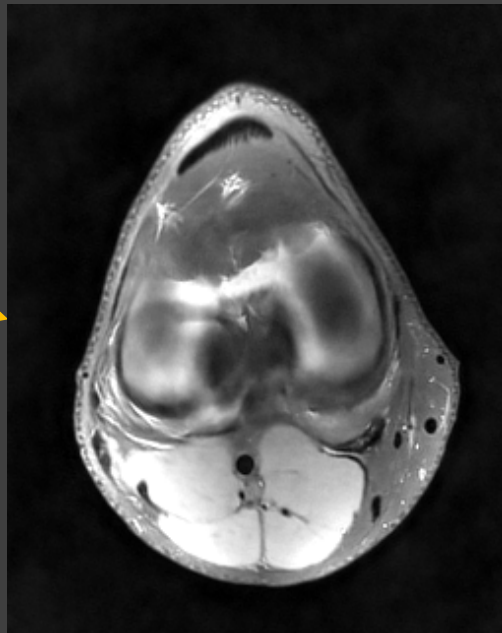


Iteration progress

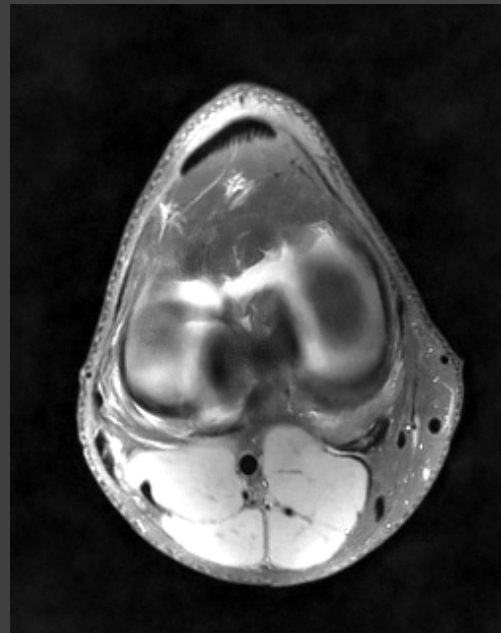
DC 5



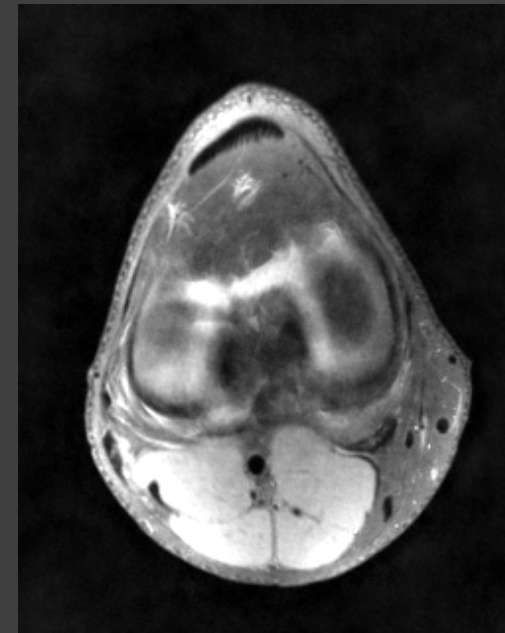
MoDL



Supervised DBP

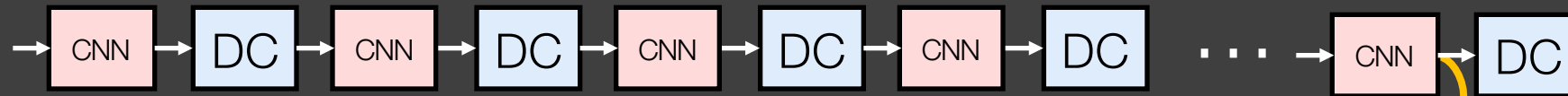


Unsupervised DBP

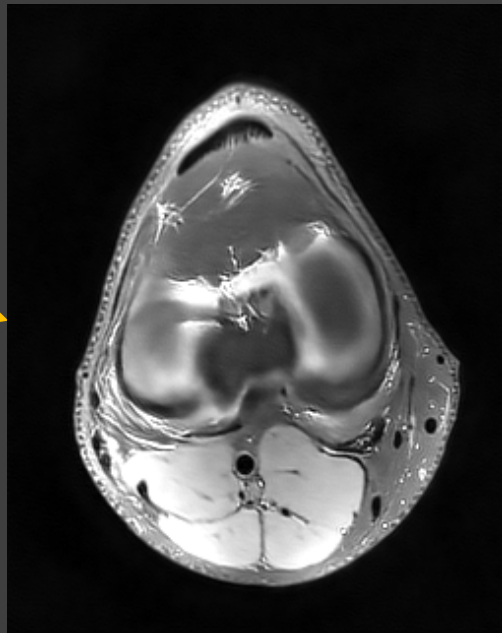


Iteration progress

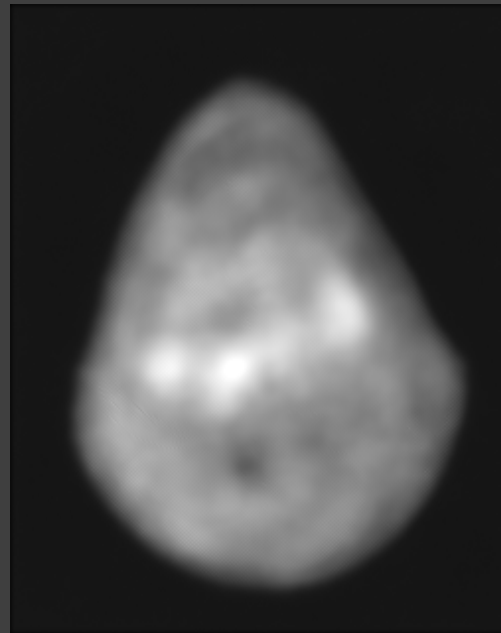
CNN 9



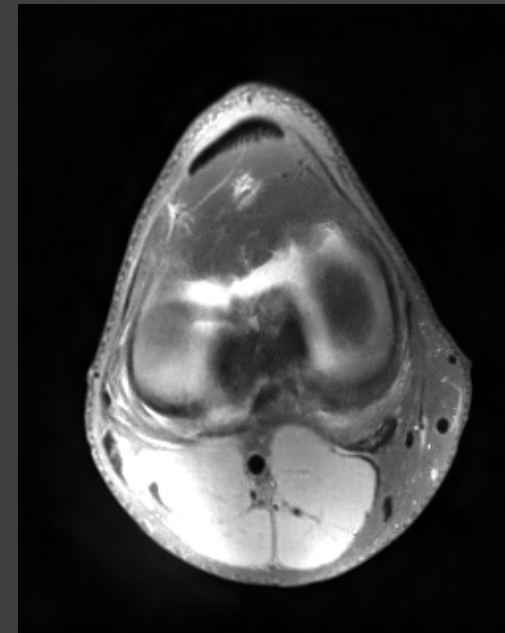
MoDL



Supervised DBP



Unsupervised DBP

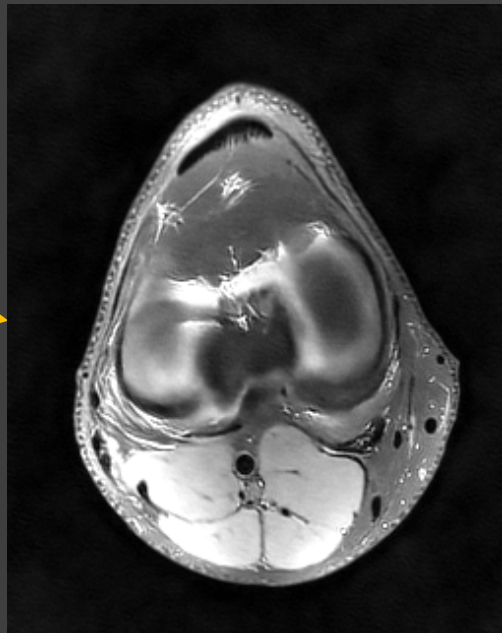


Iteration progress

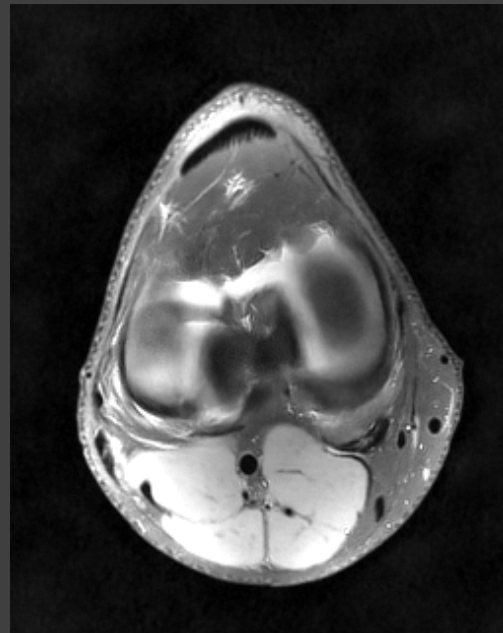
DC 10



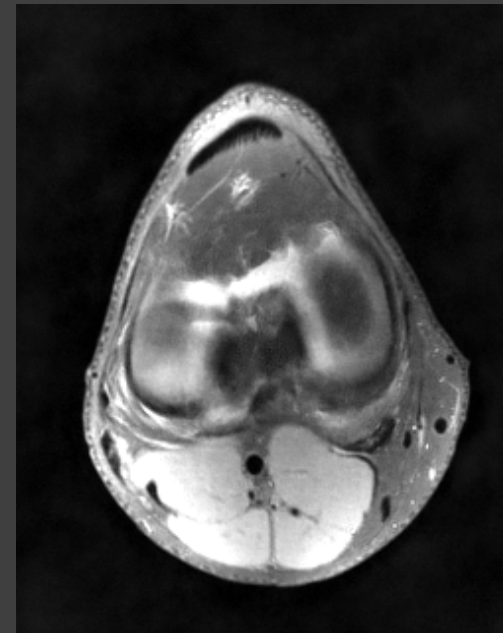
MoDL



Supervised DBP



Unsupervised DBP



Conclusion

Unsupervised training across under-sampled data:

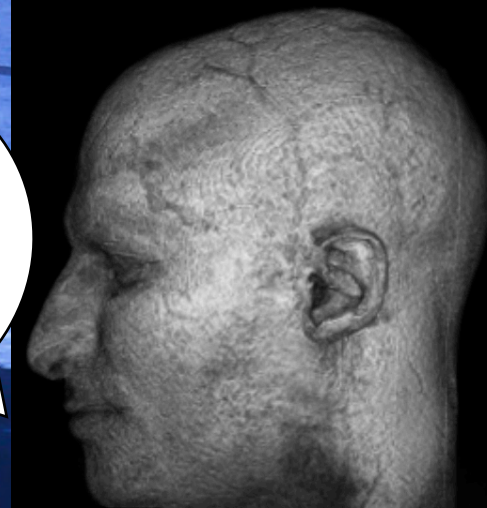
- ✓ Promising alternative when no ground-truth available
- ✗ Performance cost relative to supervised approach

Deep Basis Pursuit formulation:

- Takes advantage of known noise statistics
- Robust to number of unrolls



Thanks!



Grant Support:
NIH grants R01EB009690, R01EB019241,
P41RR09784; Sloan Research Fellowship; Bakar
Fellowship; GE Healthcare (research support)