

# Innovations Required in Data Reconstruction

Jeffrey A. Fessler

EECS Department  
University of Michigan



Summit on Management of Radiation Dose in Computerized Tomography:  
Toward the Sub-mSv Exam

Feb. 15, 2011

<http://www.eecs.umich.edu/~fessler>

## Full disclosure

- Research support from GE Healthcare
- Research support to GE Global Research
- Work supported in part by NIH grant R01-HL-098686
- Research support from Intel

# Credits

## Current students / post-docs

- Jang Hwan Cho
- Wonseok Huh
- Donghwan Kim
- Yong Long
- Madison McGaffin
- Sathish Ramani
- Stephen Schmitt
- Meng Wu

## GE collaborators

- Jiang Hsieh
- Jean-Baptiste Thibault
- Bruno De Man

## CT collaborators

- Mitch Goodsitt, UM
- Ella Kazerooni, UM
- Neal Clinthorne, UM
- Paul Kinahan, UW

## Former PhD students (who did/do CT)

- Se Young Chun, Harvard / Brigham
- Hugo Shi, Enthought
- Joonki Noh, Emory
- Somesh Srivastava, JHU
- Rongping Zeng, FDA
- Yingying, Zhang-O'Connor, RGM Advisors
- Matthew Jacobson, Xoran
- Sangtae Ahn, GE
- Idris Elbakri, CancerCare / Univ. of Manitoba
- Saowapak Sotthivirat, NSTDA Thailand
- Web Stayman, JHU
- Feng Yu, Univ. Bristol
- Mehmet Yavuz, Qualcomm
- Hakan Erdoğan, Sabanci University

## Former MS students

- Kevin Brown, Philips
- ...

# A picture is worth 1000 words

(and perhaps several 1000 seconds of computation?)



Thin-slice FBP

Seconds

ASIR

A bit longer

Statistical

Much longer

# Why statistical methods for CT?

- Accurate physical models
  - X-ray spectrum, beam-hardening, scatter, ...  
reduced artifacts? quantitative CT?
  - X-ray detector spatial response, focal spot size, ...  
improved spatial resolution?
  - detector spectral response (*e.g.*, photon-counting detectors)
- Nonstandard geometries
  - transaxial truncation (big patients)
  - long-object problem in helical CT
  - irregular sampling in “next-generation” geometries
  - coarse angular sampling in image-guidance applications
  - limited angular range (tomosynthesis)
  - “missing” data, *e.g.*, bad pixels in flat-panel systems
- Appropriate statistical models
  - weighting reduces influence of photon-starved rays  
(FBP treats all rays equally)
  - reducing image noise or **dose**

## and more...

- Object constraints
  - nonnegativity
  - object support
  - piecewise smoothness
  - object sparsity (e.g., angiography)
  - sparsity in some basis
  - motion models
  - dynamic models
  - ...

## Disadvantages?

- Computation **time** (super computer)
- Must reconstruct entire FOV
- Model complexity
- Software complexity
- Algorithm **nonlinearities**
  - Difficult to analyze resolution/noise properties (cf. FBP)
  - Tuning parameters
  - Challenging to characterize performance

# Flavors of “Statistical” reconstruction

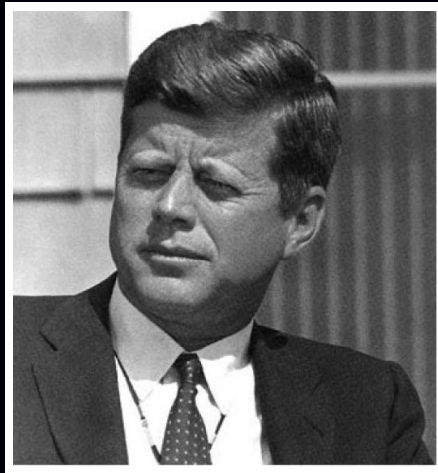
- Image domain
- Sinogram domain
- Fully statistical (both)
- Hybrid methods

# “Statistical” methods: Image domain

- Denoising methods



- Relatively **fast**, even if iterative
- Remarkable advances in denoising methods in last decade



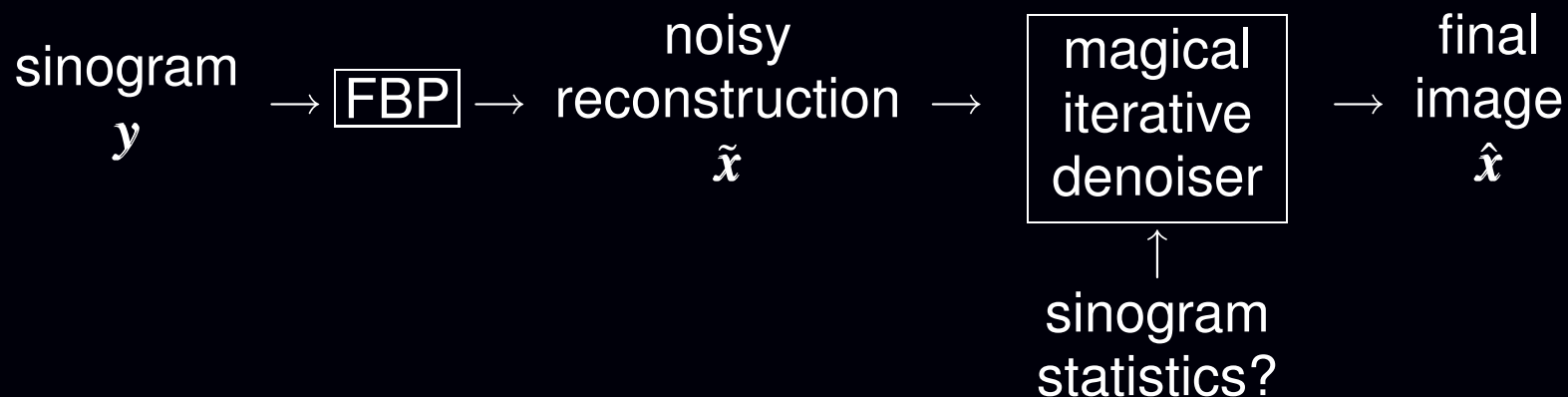
Zhu & Milanfar, T-IP, Dec. 2010, using “steering kernel regression” (SKR) method

## Challenges:

- Typically assume *white noise*
- Streaks in low-dose FBP appear like edges (highly correlated noise)



- Image denoising methods “guided by data statistics”



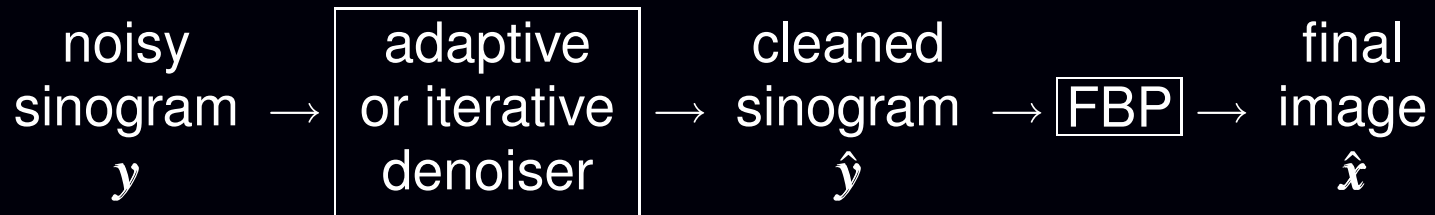
- Image-domain methods are **fast** (thus practical)
- ASIR? IRIS? ...
- The technical details are a mystery...

### Challenges:

- FBP often does not use all data efficiently (*e.g.*, Parker weighting)
- Low-dose CT statistics most naturally expressed in sinogram domain

# “Statistical” methods: Sinogram domain

- Sinogram restoration methods



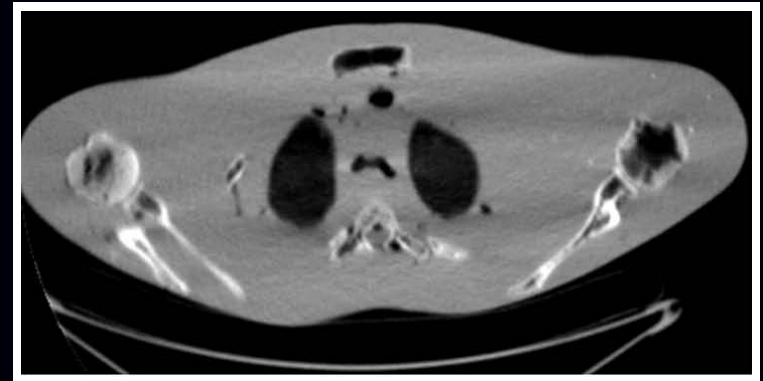
- Adaptive: J. Hsieh, Med. Phys., 1998; Kachelrieß, Med. Phys., 2001, ...
- Iterative: P. La Riviere, IEEE T-MI, 2000, 2005, 2006, 2008
- Relatively **fast** even if iterative

## Challenges:

- Limited denoising without resolution loss
- Difficult to “preserve edges” in sinograms



FBP, 10 mA

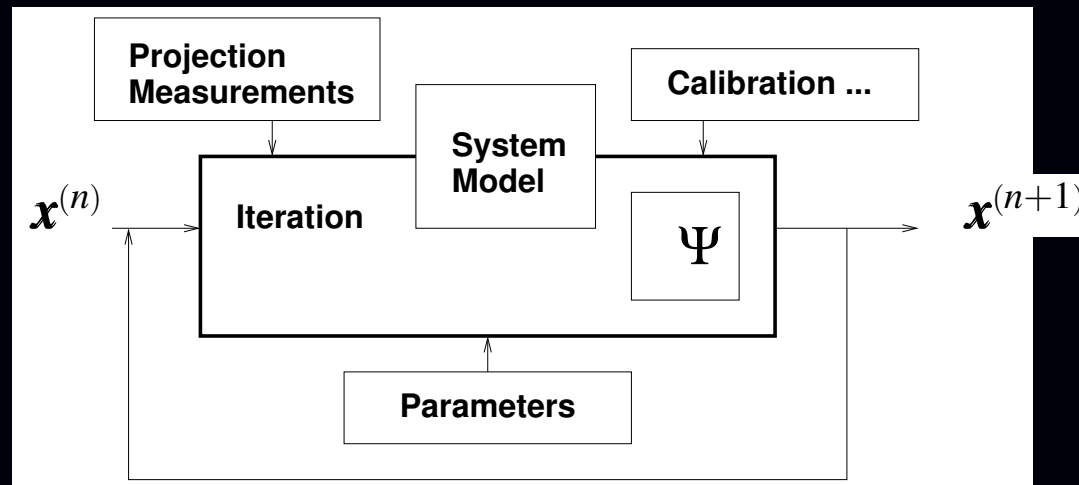


FBP from denoised sinogram

# (True? Fully? Slow?) Statistical reconstruction

- Object model
- Physics/system model
- Statistical model
- Cost function (log-likelihood + regularization)
- Iterative algorithm for minimization

“Find the image  $\hat{x}$  that best fits the sinogram data  $y$  according to the physics model, the statistical model and prior information about the object”



- Repeatedly revisiting the sinogram data can use statistics fully
- Repeatedly updating the image can exploit object properties
- $\therefore$  greatest potential **dose reduction**, but repetition is expensive...

# History: Statistical reconstruction for PET

- Iterative method for emission tomography (Kuhl, 1963)
- Weighted least squares for 3D SPECT (Goitein, NIM, 1972)
- Richardson/Lucy iteration for image restoration (1972, 1974)
- Poisson likelihood (emission) (Rockmore and Macovski, TNS, 1976)
- Expectation-maximization (EM) algorithm (Shepp and Vardi, TMI, 1982)
- Regularized (aka Bayesian) Poisson emission reconstruction (Geman and McClure, ASA, 1985)
- Ordered-subsets EM (OSEM) algorithm (Hudson and Larkin, TMI, 1994)
- Commercial release of OSEM for PET scanners circa 1997

## Key factors

- OS algorithm accelerated convergence by order of magnitude
- Computers got faster (but problem size grew too)
- Key clinical validation papers?
- Nuclear medicine physicians grew accustomed to appearance of images reconstructed using statistical methods

# Five Choices for Statistical Reconstruction

1. Object model
2. System physical model
3. Measurement statistical model
4. Cost function: data-mismatch and regularization
5. Algorithm / initialization

There are **challenges** with each choice.

# Choice 1. Object Parameterization

Finite measurements:  $\{y_i\}_{i=1}^M$ .

Continuous object:  $f(\vec{r}) = \mu(\vec{r})$ .

“All models are wrong but some models are useful.”

Linear *series expansion* approach. Represent  $f(\vec{r})$  by  $\mathbf{x} = (x_1, \dots, x_N)$  where

$$f(\vec{r}) \approx \tilde{f}(\vec{r}) = \sum_{j=1}^N x_j b_j(\vec{r}) \leftarrow \text{“basis functions”}$$

Reconstruction problem becomes “discrete-discrete:” estimate  $\mathbf{x}$  from  $\mathbf{y}$

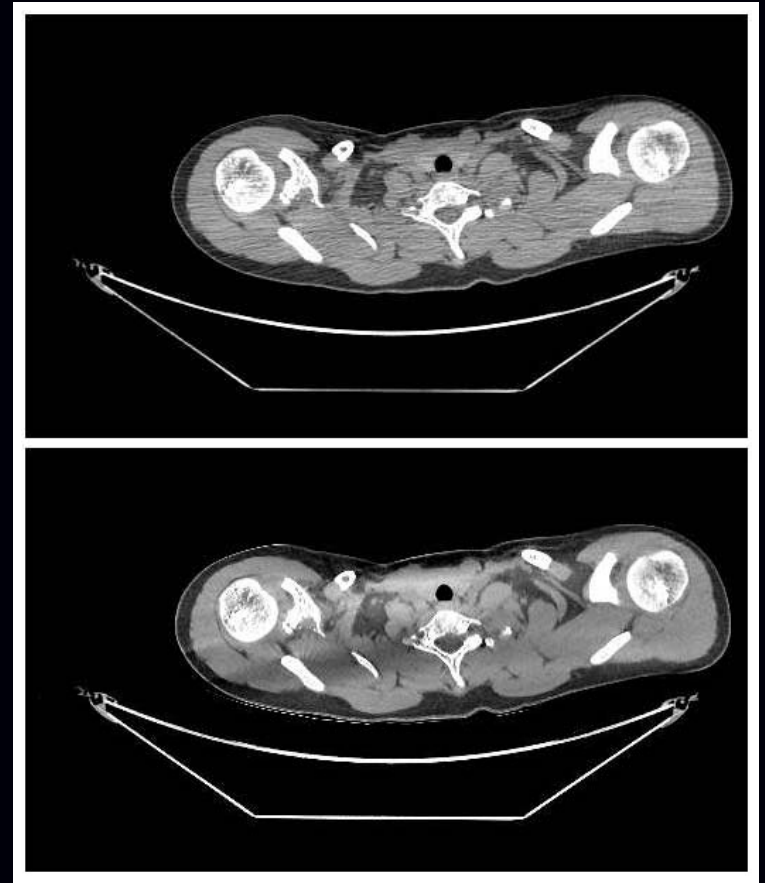
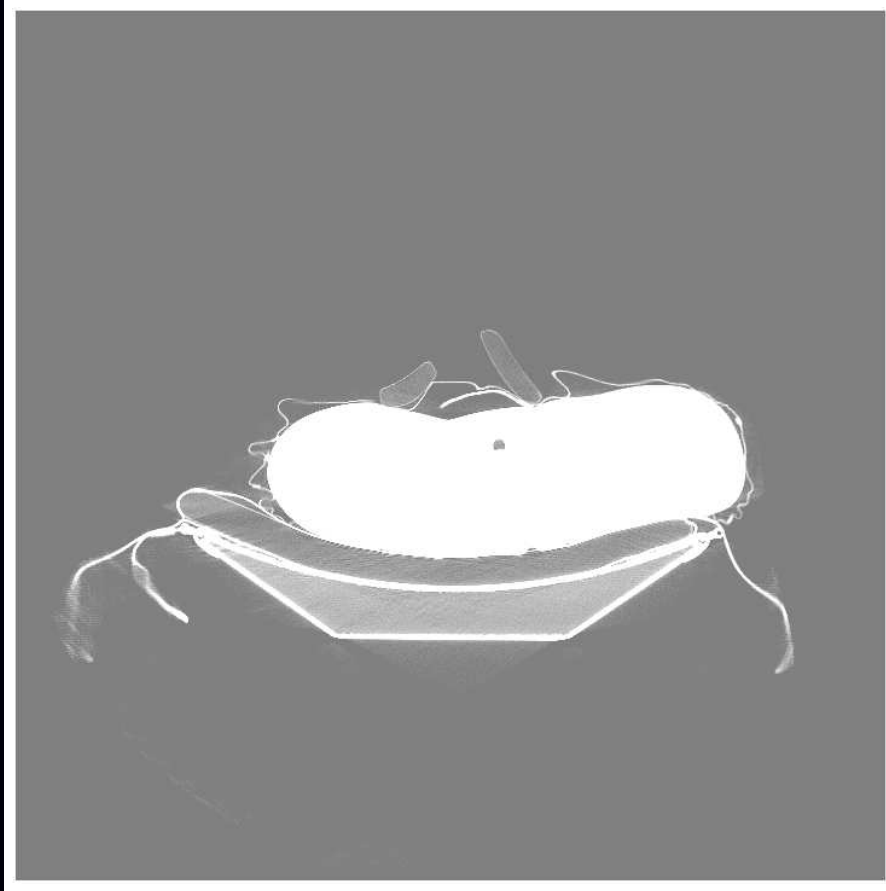
## Challenges

- Compact (voxels) versus band-limited (but bigger) blobs
- Choice of voxel size (resolution vs computation)
- Must cover entire object

One practical compromise: wide FOV coarse-grid reconstruction followed by fine-grid refinement over ROI, *e.g.*, Ziegler *et al.*, Med. Phys., Apr. 2008

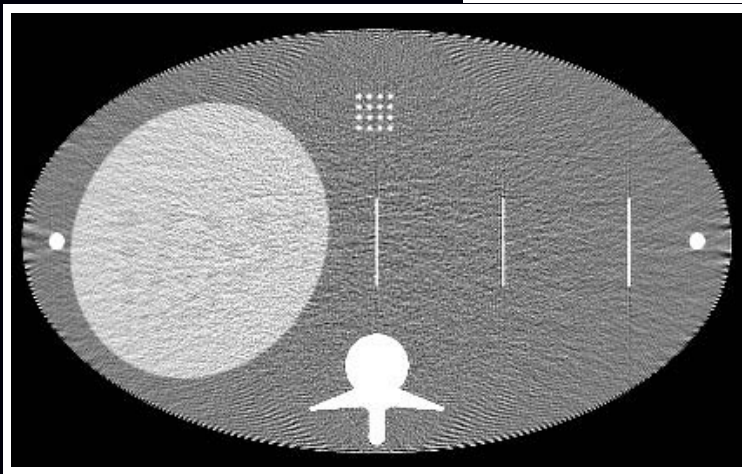
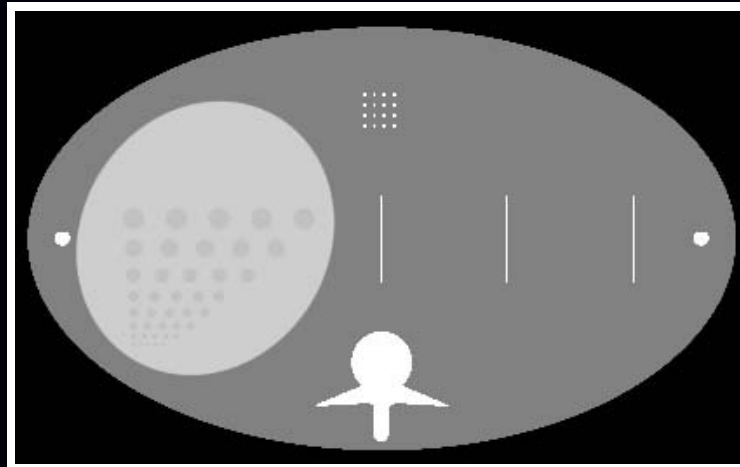
# Global reconstruction: An inconvenient truth

70-cm FOV reconstruction

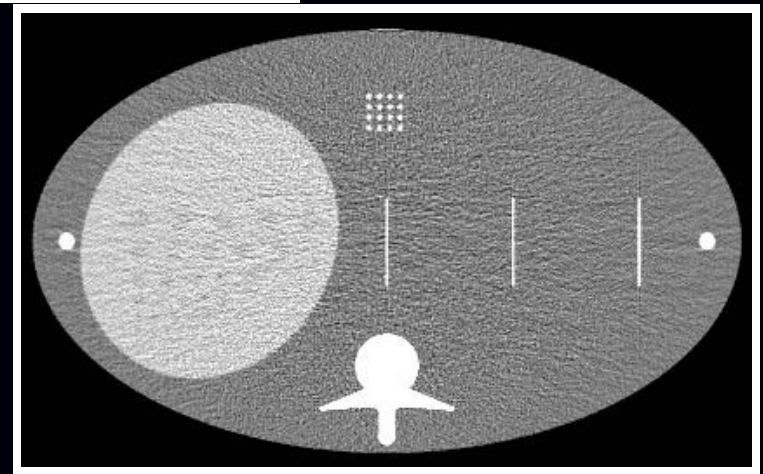


Thibault *et al.*, Fully3D, 2007

# Voxel size matters?



512 grid



1024 grid

Unregularized OS reconstructions. Zbijewski & Beekman, PMB, Jan. 2004



## Choice 2. System model / Physics model

- scan geometry
- source intensity  $I_0$ 
  - spatial variations (air scan)
  - intensity fluctuations
- resolution effects
  - finite detector size / detector spatial response
  - finite X-ray spot size / anode angulation Inhomogeneous
  - detector afterglow
- spectral effects
  - X-ray source spectrum
  - bowtie filters
  - detector spectra response
- scatter
- ...

### Challenges

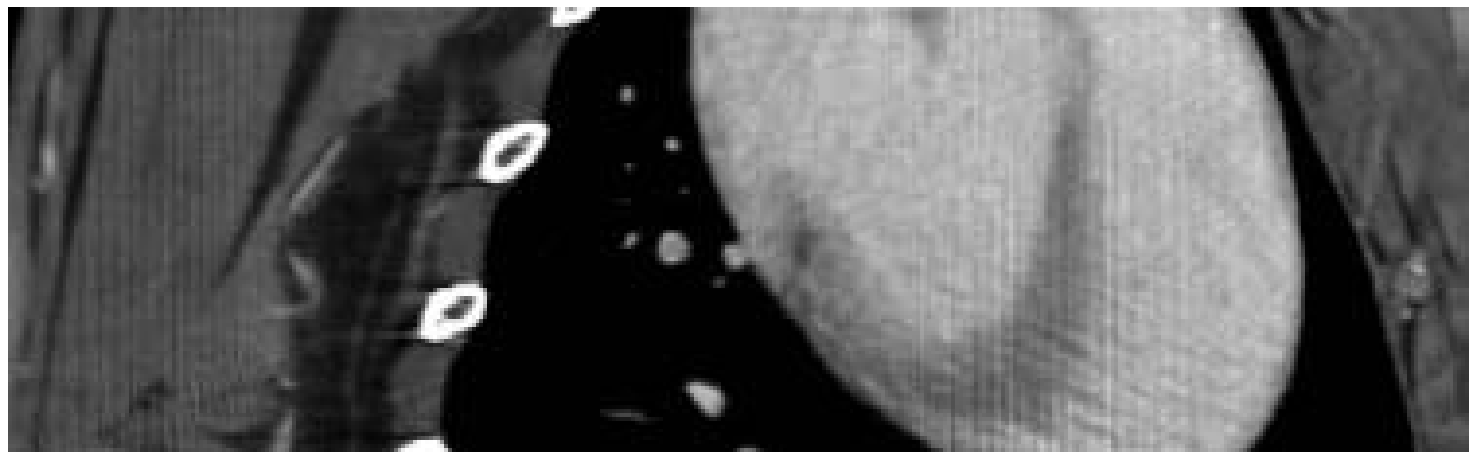
- computation time versus accuracy/artifacts/resolution/contrast
- dose?

# Lines versus strips

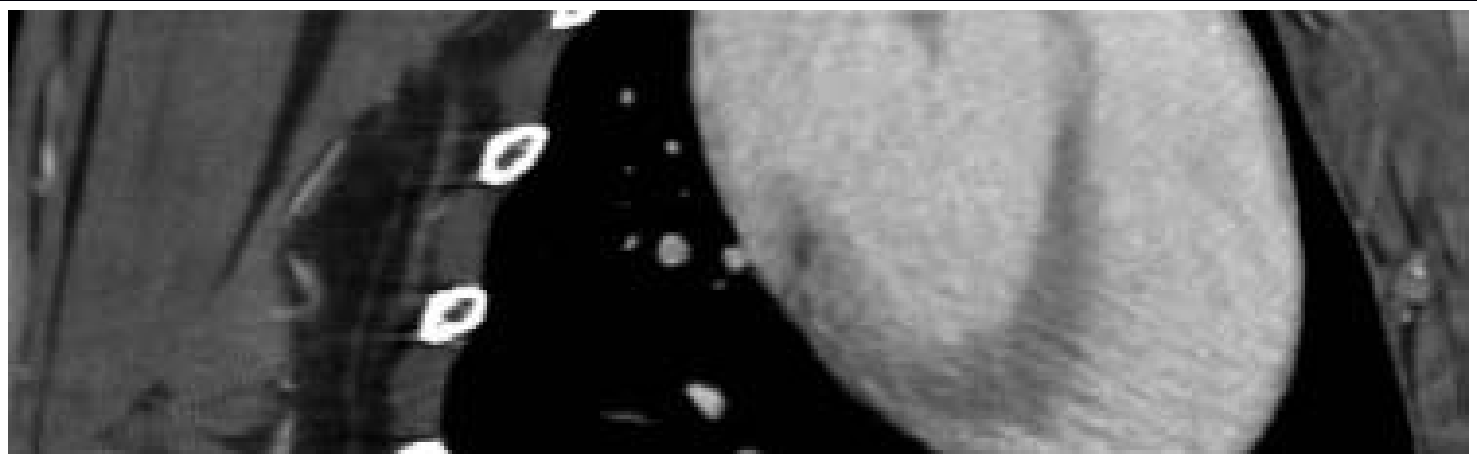
From (De Man and Basu, PMB, Jun. 2004)

MLTR of rabbit heart

Ray-driven (idealized point detector)



Distance-driven (models finite detector width)



# Projector/back-projector bottleneck

## Challenges

- Projector/backprojector algorithm design
  - Approximations (*e.g.*, transaxial/axial separability)
  - Symmetry
- Hardware / software implementation
  - GPU, CUDA, OpenCL, FPGA, SIMD, pthread, OpenMP, MPI, ...
- Further “wholistic” approaches?  
*e.g.*, Basu & De Man, “Branchless distance driven projection ...,” SPIE 2006
- ...

## Choice 3. Statistical Model

The physical model describes measurement mean, e.g., for a monoenergetic X-ray source and ignoring scatter etc.:

$$\bar{I}_i([\mathbf{Ax}]_i) = I_0 e^{-\sum_{j=1}^N a_{ij}x_j}.$$

The raw noisy measurements  $\{I_i\}$  are distributed around those means. Statistical reconstruction methods require a model for that distribution.

### Challenges

- Trade-off between using more accurate statistical models (less noise?) and computation / complexity
- CT measurement statistics are very complicated, more so at low doses
  - incident photon flux variations (Poisson)
  - X-ray photon absorption/scattering (Bernoulli)
  - energy-dependent light production in scintillator (?)
  - shot noise in photodiodes (Poisson?)
  - electronic noise in readout electronics (Gaussian?)  
Whiting, SPIE 4682, 2002; Lasio *et al.*, PMB, Apr. 2007
- Inaccessibility of raw sinogram data

# To log() or not to log() – That is the question

Models for “raw” data  $I_i$  (before logarithm)

- **compound Poisson** (complicated) Whiting, SPIE 4682, 2002;  
Elbakri & Fessler, SPIE 5032, 2003; Lasio *et al.*, PMB, Apr. 2007

- **Poisson + Gaussian** (photon variability and electronic readout noise):

$$I_i \sim \text{Poisson}\{\bar{I}_i\} + N(0, \sigma^2)$$

Snyder *et al.*, JOSAA, May 1993 & Feb. 1995

- **Shifted Poisson** approximation (matches first two moments):

$$\tilde{I}_i \triangleq [I_i + \sigma^2]_+ \sim \text{Poisson}\{\bar{I}_i + \sigma^2\}$$

Yavuz & Fessler, MIA, Dec. 1998

- **Ordinary Poisson** (ignore electronic noise):

$$I_i \sim \text{Poisson}\{\bar{I}_i\}$$

Rockmore and Macovski, TNS, Jun. 1977; Lange and Carson, JCAT, Apr. 1984

- Photon-counting detectors would simplify statistical modeling

All are somewhat complicated by the nonlinearity of the physics:  $\bar{I}_i = e^{-[Ax]_i}$

## After taking the log()

Taking the log leads to a linear model (ignoring beam hardening):

$$y_i \triangleq -\log\left(\frac{I_i}{I_0}\right) \approx [\mathbf{Ax}]_i + \varepsilon_i$$

Drawbacks:

- Undefined if  $I_i \leq 0$  (e.g., due to electronic noise)
- It is *biased* (by Jensen's inequality):  $E[y_i] \geq -\log(\bar{I}_i/I_0) = [\mathbf{Ax}]_i$
- Exact distribution of noise  $\varepsilon_i$  intractable

**Practical approach:** assume Gaussian noise model:  $\varepsilon_i \sim N(0, \sigma_i^2)$

Options for modeling noise variance  $\sigma_i^2 = \text{Var}\{\varepsilon_i\}$

- consider both Poisson and Gaussian noise effects:  $\sigma_i^2 = \frac{I_i + \sigma^2}{I_i^2}$   
Thibault *et al.*, SPIE 6065, 2006
- consider just Poisson effect:  $\sigma_i^2 = \frac{1}{I_i}$  (Sauer & Bouman, T-SP, Feb. 1993)
- pretend it is white noise:  $\sigma_i^2 = \sigma_0^2$
- ignore noise altogether and “solve”  $\mathbf{y} = \mathbf{Ax}$

Whether using pre-log data is better than post-log data is an open question.

## Choice 4. Cost Functions

Components:

- *Data-mismatch* term
- *Regularization* term (and regularization parameter  $\beta$ )
- Constraints (e.g., nonnegativity)

Reconstruct image  $\hat{\mathbf{x}}$  by minimizing a cost function:

$$\hat{\mathbf{x}} \triangleq \arg \min_{\mathbf{x} \geq 0} \Psi(\mathbf{x})$$

$$\Psi(\mathbf{x}) = \text{DataMismatch}(\mathbf{y}, \mathbf{A}\mathbf{x}) + \beta \text{Regularizer}(\mathbf{x})$$

Forcing too much “data fit” alone would give noisy images.

Equivalent to a Bayesian MAP (maximum *a posteriori*) estimator.

Distinguishes “statistical methods” from “algebraic methods” for “ $\mathbf{y} = \mathbf{A}\mathbf{x}$ .”

## Choice 4.1: Data-Mismatch Term

Standard choice is the negative log-likelihood of statistical model:

$$\text{DataMismatch} = -L(\mathbf{x}; \mathbf{y}) = -\log p(\mathbf{y}|\mathbf{x}) = \sum_{i=1}^M -\log p(y_i|\mathbf{x}).$$

- For pre-log data  $\mathbf{I}$  with **shifted Poisson** model:

$$-L(\mathbf{x}; \mathbf{I}) = \sum_{i=1}^M (\bar{I}_i + \sigma^2) - [I_i + \sigma^2]_+ \log(\bar{I}_i + \sigma^2), \quad \bar{I}_i = I_0 e^{-[\mathbf{A}\mathbf{x}]_i}$$

This can be non-convex if  $\sigma^2 > 0$ ;

it is convex if we ignore electronic noise  $\sigma^2 = 0$ . Trade-off ...

- For post-log data  $\mathbf{y}$  with **Gaussian** model:

$$-L(\mathbf{x}; \mathbf{y}) = \sum_{i=1}^M w_i \frac{1}{2} (y_i - [\mathbf{A}\mathbf{x}]_i)^2 = \frac{1}{2} (\mathbf{y} - \mathbf{A}\mathbf{x})' \mathbf{W} (\mathbf{y} - \mathbf{A}\mathbf{x}), \quad w_i = 1/\sigma_i^2$$

This is a kind of (data-based) weighted least squares (**WLS**).

It is always convex in  $\mathbf{x}$ . Quadratic functions are “easy” to minimize.

- ...



## Choice 4.2: Regularization

Controlling noise due to ill-conditioning via imposing constraints

Options for regularizer  $R(\mathbf{x})$  in increasing complexity:

- quadratic roughness
- convex, non-quadratic roughness
- non-convex roughness
- total variation
- convex sparsity
- non-convex sparsity

### Challenges

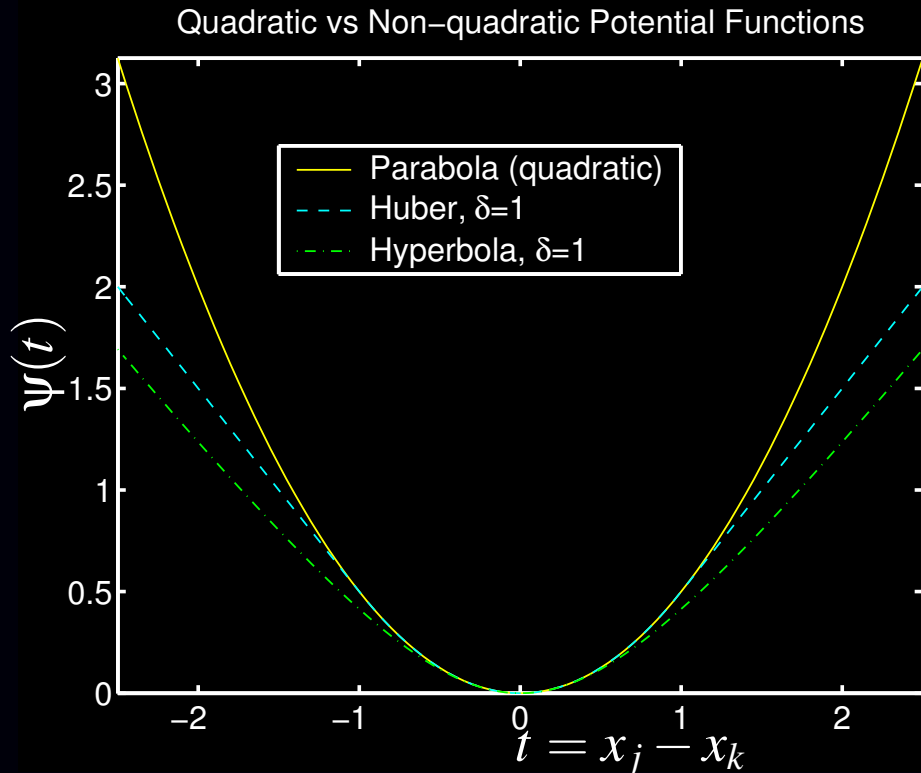
- Reducing noise without degrading spatial resolution
- Balancing regularization strength between and within slices
- Parameter selection
- Computational complexity (voxels have 26 neighbors in 3D)
- Preserving “familiar” noise texture
- Optimizing clinical task performance

Many open questions...

# Roughness Penalty Functions

$$R(\mathbf{x}) = \sum_{j=1}^N \frac{1}{2} \sum_{k \in \mathcal{N}_j} \psi(x_j - x_k)$$

$\mathcal{N}_j \triangleq$  *neighborhood* of  $j$ th pixel (e.g., left, right, up, down)  
 $\psi$  called the *potential function*



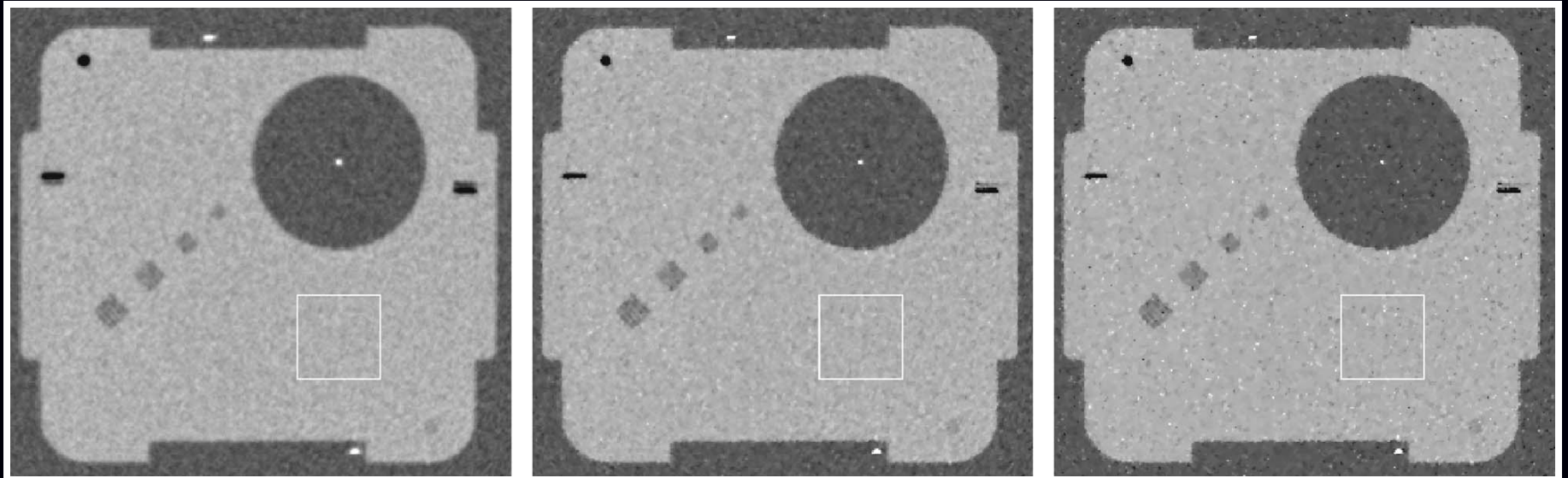
quadratic:  $\psi(t) = t^2$   
hyperbola:  $\psi(t) = \sqrt{1 + (t/\delta)^2}$   
(edge preservation)

# Regularization parameters: Dramatic effects

Thibault *et al.*, Med. Phys., Nov. 2007

“ $q$  generalized gaussian” potential function with tuning parameters:  $\beta, \delta, p, q$ :

$$\beta \psi(t) = \beta \frac{\frac{1}{2}|t|^p}{1 + |t/\delta|^{p-q}}$$



$p = q = 2$

$p = 2, q = 1.2, \delta = 10 \text{ HU}$

$p = q = 1.1$

noise: 11.1  
(#lp/cm): 4.2

10.9  
7.2

10.8  
8.2

# Summary thus far

1. Object parameterization
2. System physical model
3. Measurement statistical model
4. Cost function: data-mismatch / regularization / constraints

**Reconstruction Method  $\triangleq$  Models + Cost Function + Algorithm**

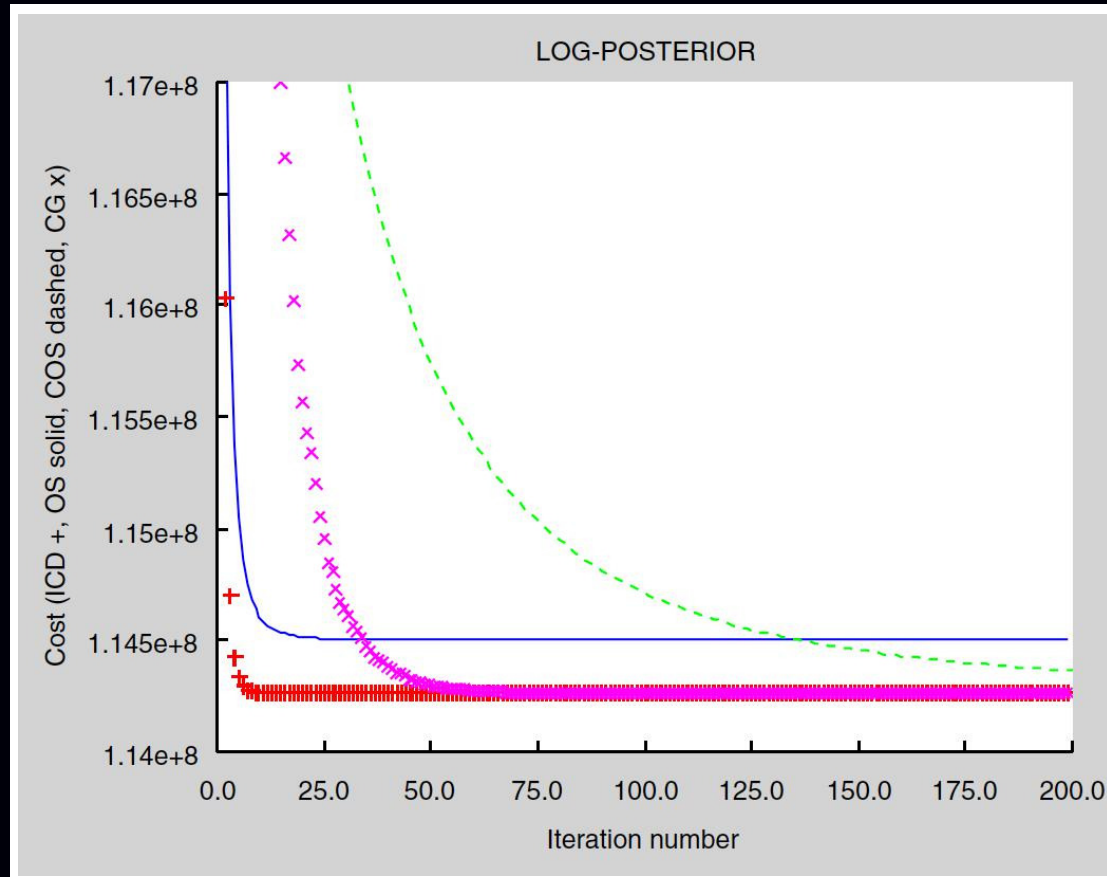
5. Minimization algorithms:

$$\hat{x} = \underset{x}{\operatorname{arg\,min}} \Psi(x)$$

## Choice 5: Minimization algorithms

- **Conjugate gradients**
  - Converges slowly for CT
  - Difficult to precondition due to weighting and regularization
  - Difficult to enforce nonnegativity constraint
  - Very easily parallelized
- **Ordered subsets**
  - Initially converges faster than CG if many subsets used
  - Does not converge without relaxation etc., but those slow it down
  - Computes regularizer gradient  $\nabla R(\mathbf{x})$  for every subset - expensive?
  - Easily enforces nonnegativity constraint
  - Easily parallelized
- **Coordinate descent** (Sauer and Bouman, T-SP, 1993)
  - Converges high spatial frequencies rapidly, but low frequencies slowly
  - Easily enforces nonnegativity constraint
  - Challenging to parallelize
- **Block coordinate descent** (Benson *et al.*, NSS/MIC, 2010)
  - Spatial frequency convergence properties depend...
  - Easily enforces nonnegativity constraint
  - More opportunity to parallelize than CD

# Convergence rates

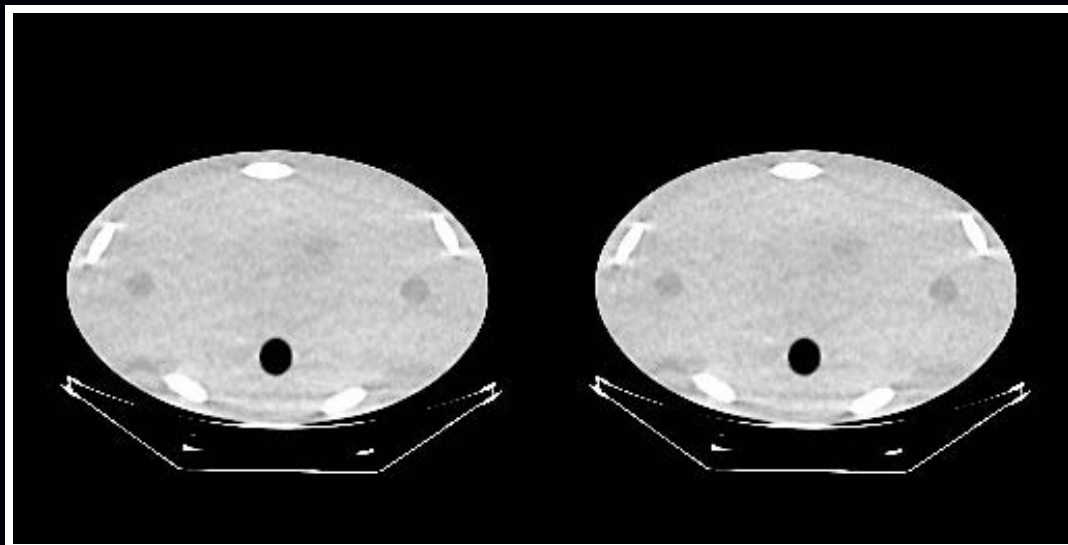


(De Man *et al.*, NSS/MIC 2005)

In terms of iterations: **CD** < **OS** < **CG** < **Convergent OS**  
In terms of compute time? (it depends...)

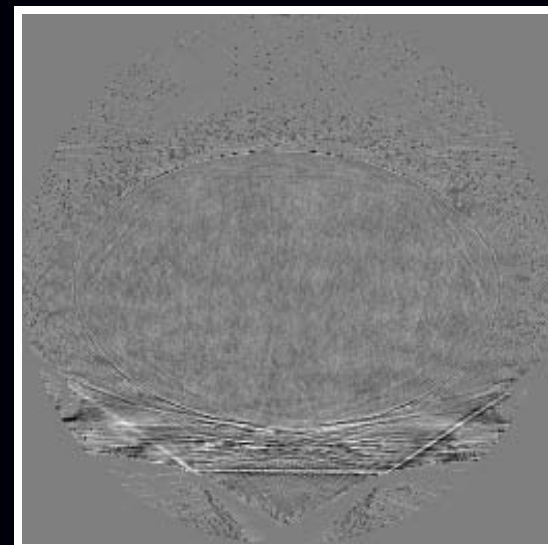
## Ordered subsets convergence

Theoretically OS does not converge, but it may get “close enough,” even with regularization.



CD  
200 iter

OS  
41 subsets  
200 iter



difference  
 $0 \pm 10\text{HU}$

display:  $930 \text{ HU} \pm 58 \text{ HU}$

(De Man *et al.*, NSS/MIC 2005)

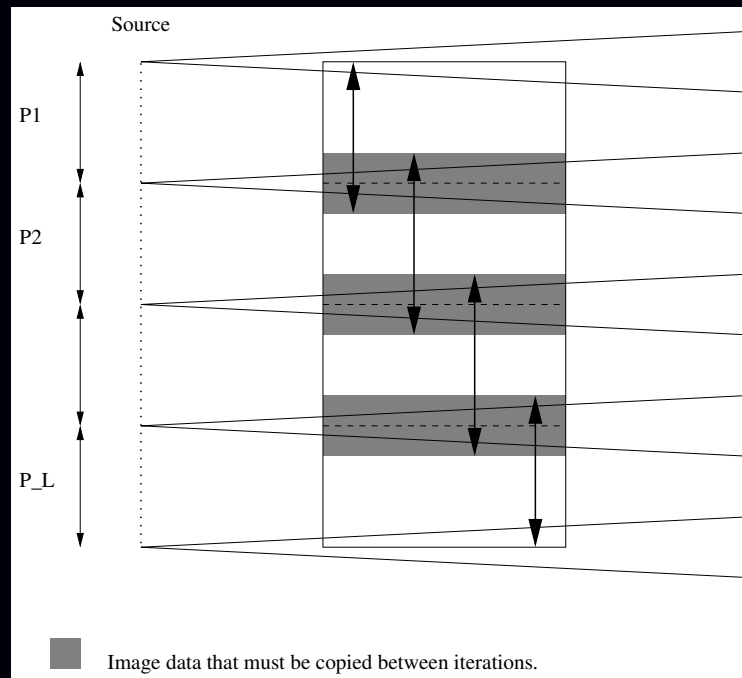
Ongoing saga...

(SPIE, ISBI, Fully 3D, ...) 31

# Optimization algorithms

## Challenges:

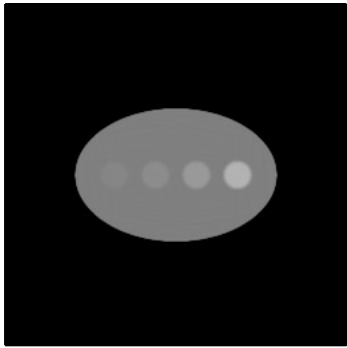
- theoretical convergence (to establish gold standards)
- practical: near convergence in few iterations
- highly parallelizable
- efficient use of hardware: memory bandwidth, cache, ...
- predictable stopping rules
- partitioning of helical CT data across multiple compute nodes



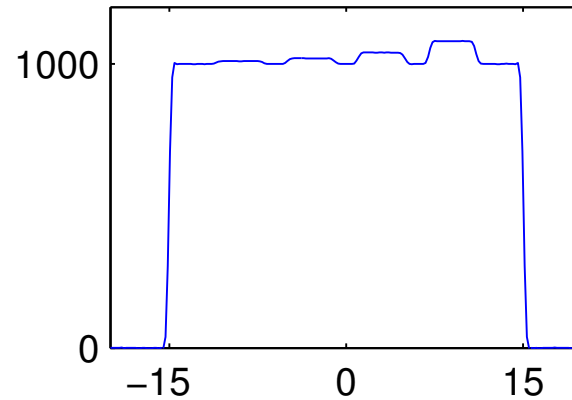


# Resolution characterization: 2D CT

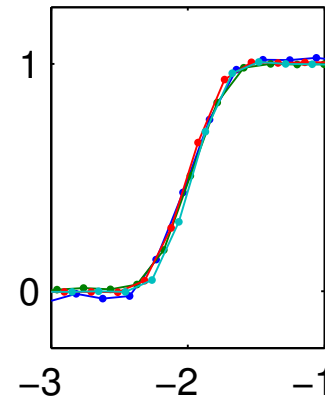
FBP



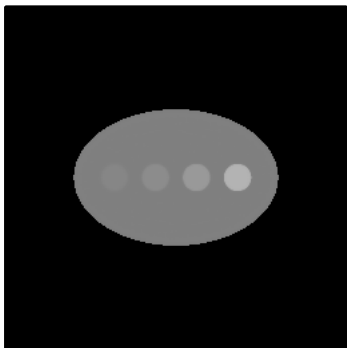
Profile



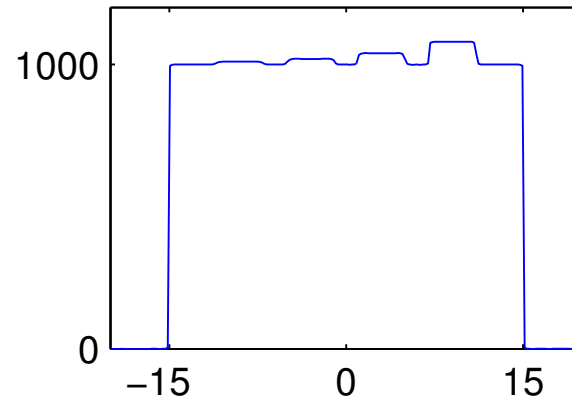
Edge response



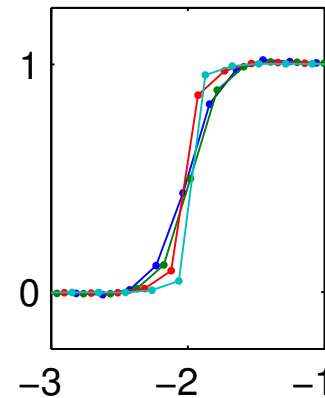
PWLS



Profile



Edge response



**Challenge:**

*Shape of edge response depends on contrast for edge-preserving regularization.*

# Assessing image quality

## Challenges:

- Resolution (PSF, edge response, MTF)
- Noise
- Task-based performance measures  
Known-location versus unknown-location tasks
- ...

“How low can the dose go” – quite challenging to answer

# Some open problems

- **Modeling**
  - Statistical modeling for very low-dose CT
  - Resolution effects
  - Spectral CT
  - Object motion
- **Parameter selection / performance characterization**
  - Performance prediction for nonquadratic regularization
  - Effect of nonquadratic regularization on detection tasks
  - Choice of regularization parameters for nonquadratic regularization
- **Algorithms**
  - optimization algorithm design
  - software/hardware implementation
  - Moore's law alone will not suffice  
(dual energy, dual source, motion, dynamic, smaller voxels ...)
- **Clinical evaluation**
- ...

# The CT reconstruction research environment

## Challenges

- raw sinogram access is very limited (*cf.* PET, MRI)
- CT preprocessing steps are considered highly proprietary
- No standard databases of sinogram test data sets (*cf.* post-processing)
- Trainees perceived to be data processors, not CT scientists (*cf.* MRI)
- Commercial solutions largely will have predetermined parameters

Nevertheless, the CT reconstruction revolution will occur, like in PET...

Dr. Thrall: statistical image reconstruction will have the **single largest bang** for impacting dose.