



VOLTAGE STABILITY ENHANCEMENT VIA MODEL PREDICTIVE CONTROL OF LOAD*

I.A. HISKENS AND B. GONG

Department of Electrical and Computer Engineering
University of Wisconsin - Madison
Madison, WI 53706 USA

ABSTRACT—Impending voltage collapse can often be avoided by appropriate control of loads. However the traditional form of load control (shedding) is unpopular due to the resulting consumer disruption. Advances in communications and computer systems allow more selective load control though. Individual loads that are sacrificeable in the short-term can be switched with minimal consumer disruption. The paper considers the use of such non-disruptive load control for improving voltage stability. A control strategy that is based on model predictive control (MPC) is proposed. MPC utilizes an internal model to predict system dynamic behavior over a finite horizon. Control decisions are based on optimizing that predicted response. MPC is a discrete-time form of control, so inaccuracies in predicted behavior are corrected at the next control interval. A standard 10 bus voltage collapse example is used to illustrate this control strategy.

Key Words: Voltage stability, load shedding, model predictive control, dynamic embedded optimization.

1. INTRODUCTION

Load control provides an effective means of alleviating voltage collapse. For example the cascading failure of the North American power system in August 2003 could have been avoided by tripping a relatively small amount of load in the Cleveland area [1]. The most effective load shedding strategies are not always so obvious though. Low voltages often provide a good indication of locations where load shedding would assist in relieving system stress [2]. However counter-examples exist, with Figure 1 allowing a simple illustration.

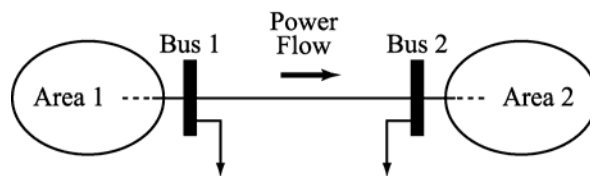


Figure 1. Illustration of inappropriate undervoltage load shedding

Consider the situation where the power being exported from Area 1 to Area 2 overloads the corridor between buses 1 and 2. (This may be a consequence of unexpected line tripping between these buses.) As a result of the overload, lines forming the corridor will demand high levels of reactive power, causing voltages at both end buses to fall. Undervoltage load shedding at bus 1, without a matching reduction in Area 1 generation, would likely lead to an increase in power flow over the troublesome corridor. This would exacerbate the situation. Undervoltage load shedding at bus 2 would probably achieve its desired goal. Clearly situations arise where a coordinated approach to load shedding is required. A range of such load shedding schemes have been proposed and/or implemented, see for example [3], [4], [5]. This paper presents preliminary work in the development of an approach based on model predictive control (MPC). It shares some similarities with the MPC-based emergency control scheme of [6].

* Research supported by PScrc through the project “Security Enhancement through Direct Non-Disruptive Load Control”, and the National Science Foundation through grant ECS-0332777.

The traditional form of load control (shedding) is quite disruptive to consumers, and often avoided because of the discontent created. However if it were possible to switch small pieces of load, so that interruptions were effectively unnoticed by consumers, then load control would be more palatable. Recent advances in communications and computer systems facilitate such non-disruptive load control.

The paper is organized as follows. Sections 2 and 3 provide overviews of non-disruptive load control and model predictive control respectively. Section 4 discusses MPC implementation issues, and an example is explored in Section 5. Conclusions are presented in Section 6.

2. NON-DISRUPTIVE LOAD CONTROL

Many consumer installations consist of loads that are at least partially controllable [7], [8]. Commercial loads typically involve a high proportion of air conditioning and lighting. The thermal time-constant of many commercial buildings is usually quite long. Therefore air conditioning in large multi-storied buildings can be shed with no appreciable short-term effects on building climate. Similarly, a short-term reduction in lighting load is often possible without compromising the building environment. Partial load control within industrial and residential installations is also possible. In the residential case for example, one circuit within a home could be designated for interruptible supply, with a corresponding lower energy charge. That circuit could be used for lower priority loads such as dryers and/or freezers. A similar concept applies for industrial consumers. In the latter case though, it may also be possible to use backup generation to displace grid supply.

The distributed nature of non-disruptive load control implies a need for a hierarchical control structure, as suggested in Figure 2. A lower (substation) level controller is required to coordinate the many small controllable loads. In standby mode, this controller would continually poll loads to track availability of controllable load. Availability information would be passed to the higher level. When load control was required, the higher level controller would specify the desired load change. The substation-level controller would implement that load change by signaling the individual loads. The anticipated and actual load responses may differ. This information would again be coordinated at the lower level and passed to the higher level in preparation for further control action.

The higher-level controller collects system-wide information on controllable-load availability, and formulates feasible responses to disturbances. As suggested earlier, often a simple undervoltage load shedding strategy is inadequate for arresting voltage instability. The higher-level controller must determine the appropriate amount of load to regulate at each location, for arbitrary disturbance scenarios, and in the presence of system and load (actuator) uncertainty. Also, the amount of load disrupted should be minimized. Model predictive control provides an appropriate control strategy for meeting those goals.

3. MODEL PREDICTIVE CONTROL

Model predictive control (MPC) is a discrete-time form of control, with commands issued at periodic intervals [9], [10]. Figure 3 provides an illustration of the MPC process. Each control decision is obtained by first estimating the system state. This provides the initial condition for prediction (simulation) of subsequent dynamic behaviour. The prediction stage is traditionally formulated as an open-loop optimal control problem over a finite horizon. This results in the corresponding open-loop control sequence. MPC applies the initial control signal from that sequence. The process is repeated at the next MPC interval, with the state estimator providing a new initial condition for a new prediction (optimal control) problem.

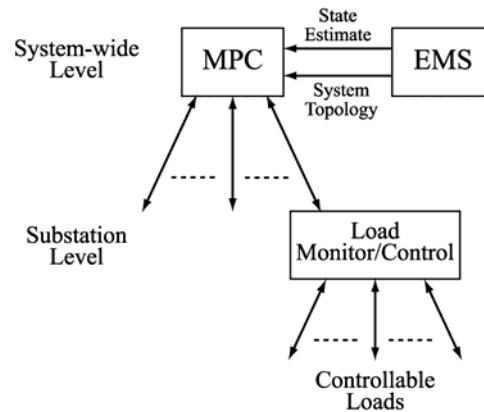


Figure 2. Hierarchical load control structure

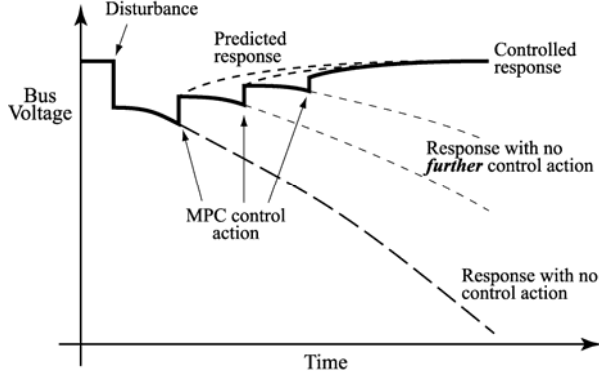


Figure 3. MPC response

deviates from that predicted response though. However feedback is effectively achieved through the correction applied when the next MPC control signal is issued. This is illustrated in Figure 3.

4. MPC IMPLEMENTATION

A number of factors influence the design of MPC for voltage stability enhancement. These are outlined below.

4.1 Load model

MPC implementation is not limited to any particular load model. It is important though that the effect of load control action is incorporated into the model. For example voltage dependent load would be modeled as

$$P(V, \lambda) = (1 - \lambda)P_0 \left(\frac{V}{V_0} \right)^\alpha \quad (1)$$

and similarly for reactive power $Q(V, \lambda)$. No load shedding (full load) corresponds to $\lambda = 0$, while complete load shedding is given by $\lambda = 1$. In fact, if the load were partially served by local distributed generation, it is (theoretically) possible for the bus to become a net exporter of energy, corresponding to $\lambda > 1$.

The MPC algorithm must take account of the limits on the amount of load that is available for control. Let the maximum amount of load that can be shed at a particular location j be λ_{\max}^j . Then at any MPC interval,

$$0 \leq \lambda_j + \Delta\lambda_j \leq \lambda_{\max}^j \quad (2)$$

where λ_j is the load shed due to previous MPC action, and $\Delta\lambda_j$ is the new load change. Note that this assumes previously shed load can be restored. If that is not the case, i.e., there is a latching mechanism, then (2) becomes simply $0 \leq \Delta\lambda_j \leq \lambda_{\max}^j - \lambda_j$. It may also be appropriate to limit the load change at any interval, according to $\Delta\lambda_{\min}^{\text{change}} \leq \Delta\lambda \leq \Delta\lambda_{\max}^{\text{change}}$. For example, such limits may be necessary to avoid excessive voltage steps. All these limits can be combined together to give

$$\Delta\lambda_{\min}^j \leq \Delta\lambda_j \leq \Delta\lambda_{\max}^j \quad (3)$$

where $\Delta\lambda_{\min}^j$ and $\Delta\lambda_{\max}^j$ are the most stringent minimum and maximum limits respectively.

Power system dynamic behaviour often involves interactions between continuous dynamics and discrete events, particularly during voltage collapse when many discrete devices switch. Formulation of optimal control problems for such hybrid behaviour is fraught with technical difficulties. In such cases, it is more appropriate to formulate the prediction process as a dynamic embedded optimization problem [11], [12]. Such problems are similar to optimal control, but optimization is over a single vector of control decisions, rather than a sequence of controls.

The optimization problem underlying MPC involves open-loop prediction of system behaviour. Actual behaviour invariably

4.2 Voltage constraints

The aim of the MPC process is to shed just enough load that bus voltages recover to within acceptable voltage bounds $[V_l \ V_u]$. Driving voltages to within these bounds terminates the voltage collapse process. This requirement is implemented in the MPC optimization formulation by placing constraints on the voltage at the prediction horizon,

$$V_l^i \leq V_i(T_h) \leq V_u^i \quad (4)$$

where T_h is the prediction horizon time.

4.3 MPC optimization

The MPC optimization process determines minimal load changes $\Delta\lambda_j$ that ensure voltage constraints (4) are satisfied. This results in a nonlinear, constrained, dynamic embedded optimization problem. An iterative process is required to solve such problems, with each iteration involving simulation over the prediction horizon T_p . However these simulations can be avoided by approximating voltage behaviour using trajectory sensitivities. The Taylor series expansion of the voltage response $V_i(t)$ following load changes $\Delta\lambda_j$ is given by

$$V_i(t) = V_{pred}^i(t) + \sum_j (S_{ij}(t)\Delta\lambda_j) + \text{higher order terms} \quad (5)$$

where $V_{pred}^i(t)$ is the prediction of system behaviour with no further MPC control action, $S_{ij}(t) \equiv \frac{\partial V_i}{\partial \lambda_j}$ is the

sensitivity of the voltage at bus i to the amount of load shed at bus j , and $\Delta\lambda_j$ are candidate load changes. These trajectory sensitivities can be obtained as a by-product of the prediction process, so involve negligible extra computational cost [13]. Neglecting higher order terms in (5) gives a computationally efficient first order approximation for $V_i(t)$.

The errors in this approximation will result in (slightly) sub-optimal load controls $\Delta\lambda$ being applied by MPC. However the effects of that sub-optimality will only persist until MPC next runs. At that time, the whole optimization process is repeated.

The optimization objective is to shed the minimal amount of load, $\min_{\Delta\lambda} \sum_j |\lambda_j + \Delta\lambda_j|$. By observing (2), this can be restated

$$\min_{\Delta\lambda} \sum_j (\lambda_j + \Delta\lambda_j). \quad (6)$$

For each MPC optimization, the amount of load previously shed at each bus λ_j is a constant. Therefore the objective function can be further simplified. Collecting together the objective and constraints gives the linear programming (LP) problem

$$\min_{\Delta\lambda} \sum_j \Delta\lambda_j \quad (7)$$

subject to

$$\Delta\lambda_{\min}^j \leq \Delta\lambda_j \leq \Delta\lambda_{\max}^j \quad (8)$$

$$V_l^i \leq V_{pred}^i(T_h) + \sum_j (S_{ij}(T_h)\Delta\lambda_j) \leq V_u^i, \quad \forall i. \quad (9)$$

Such problems can be solved efficiently, even for very large sets of equations.

5. EXAMPLE

The small system of Figure 4 is well established as a benchmark for exploring voltage stability issues [2], [14], [15]. An outage of any one of the feeders between buses 5 and 7 results in voltage collapse behaviour. This is illustrated in Figure 5 for a line outage at 10 seconds. In response to the line trip,

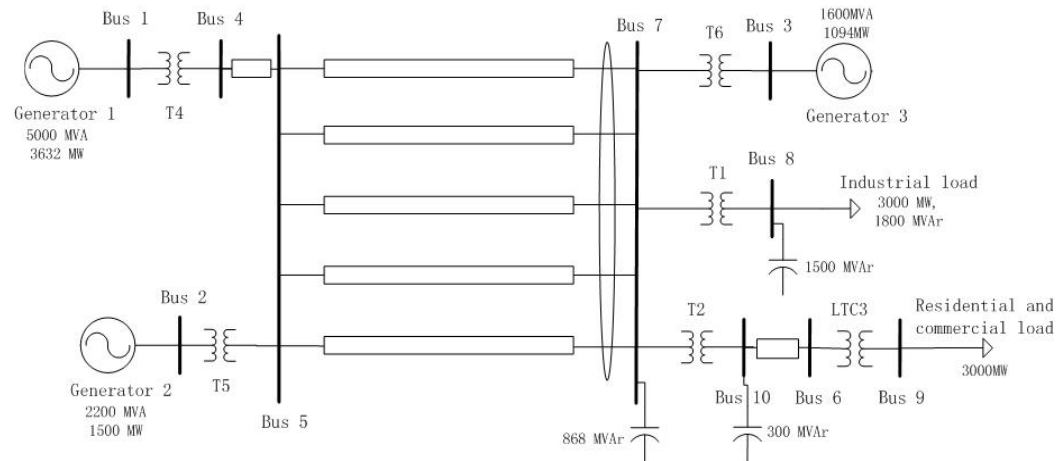


Figure 4. Voltage collapse test system

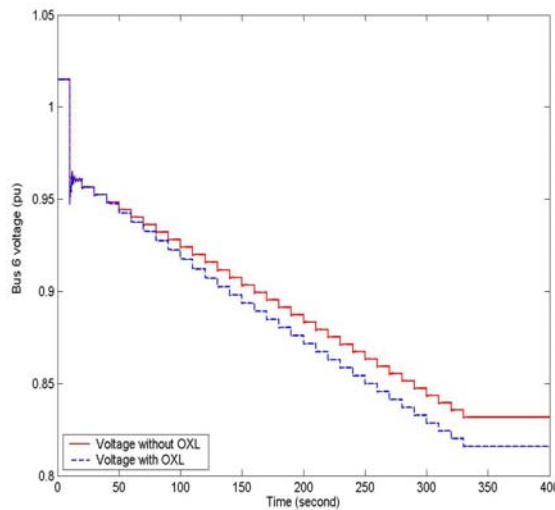


Figure 5. Voltage response without MPC

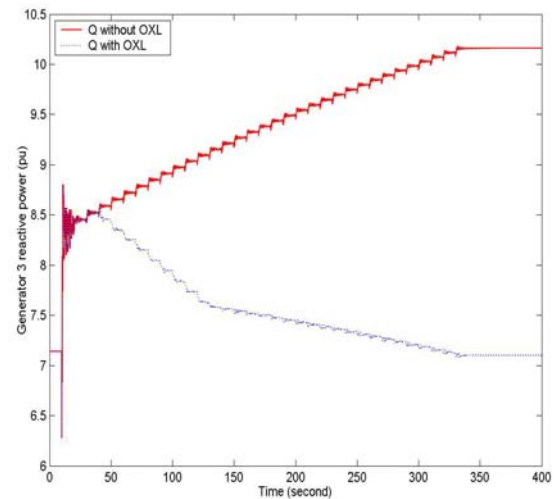


Figure 6. Reactive support provided by generator 3, without MPC

voltages across the right-hand network dropped. This caused load tap changers (LTCs) to respond in an attempt to restore load bus voltages. Tap changing actually drove voltages lower though, resulting in voltage collapse.

Two situations were considered, 1) no over-excitation limiter (OXL) on generator 3 (solid curve), and 2) inclusion of an OXL on generator 3 (dashed line). Both exhibit undesirable voltage behaviour, though the OXL clearly induced a more onerous response. The reactive support provided by generator 3, for the two cases, is shown in Figure 6. The OXL ensures that reactive demand does not rise to a damaging level.

The studies presented subsequently explore the MPC model detail required to achieve adequate control. To enable this comparison, the system was modelled precisely. A sixth order model (two axes, with two windings on each axis) [16] was used for each generator, and standard models AC4A and PSS1A [17] for all AVRs and PSSs respectively. The OXL model was taken from [15]. A standard induction motor model [15] was used for the industrial load at bus 8, and a static voltage dependent representation for the bus 9 load. The AVR of transformer LTC3 was represented by a model that captured switching events associated with deadbands and timers [18].

In all cases, MPC was set to run every 50 seconds, with a horizon time that was also set at $T_h = 50$ seconds. The control objective was to restore the voltages of buses 6 and 8 above 0.98 pu by shedding minimum load at buses 8 and 9. (These two sets of buses were chosen to avoid symmetry between load-shed buses and voltage-regulated buses.) This objective was achieved by solving the LP optimization problem (7)-(9) for $\Delta\lambda_8$ and $\Delta\lambda_9$ at each step of the MPC control sequence.

5.1 Perfect MPC model

This initial investigation considered the ideal (though unrealistic) situation where the internal MPC model exactly matched the real system. The voltages at the regulated buses are shown in Figure 7. It is apparent that in response to the initial MPC load control command, both voltages rose above their specified minimum values. The initial MPC command therefore over-compensated for the collapsing voltages by shedding too much load. This was a consequence of approximating perturbed trajectories in (9) using trajectory sensitivities, i.e., neglecting higher order terms in (5). The voltage overshoot was corrected with the second MPC control command though, with the bus 6 voltage falling to its lower limit of 0.98 pu. At this step, some load was actually restored; see Figure 8 for the load shedding commands. Note that negligible MPC action is required beyond the second control interval.

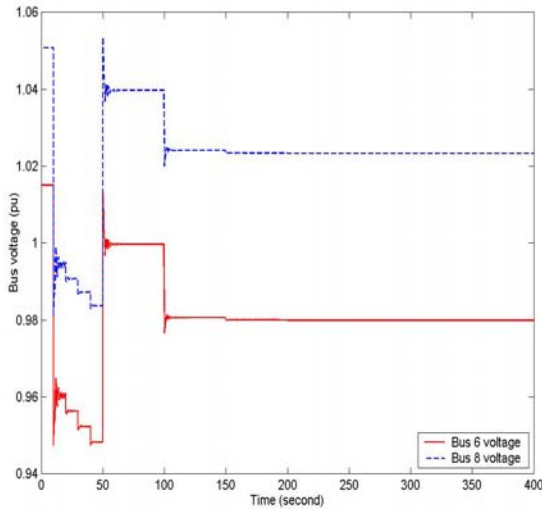


Figure 7. Voltage response, perfect MPC model

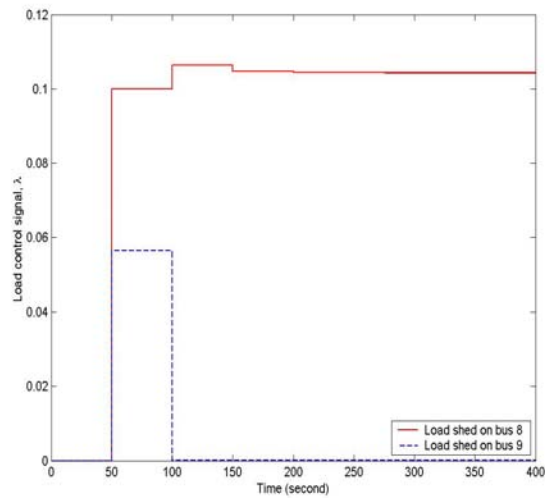


Figure 8. Load control signal, perfect MPC model

5.2 Imprecise load response

The nature of non-disruptive load control means there will always be some uncertainty in the amount of load that is actually available for control. To investigate this situation, the load control signals generated by MPC were randomly perturbed by up to $\pm 10\%$. Figure 9 shows that performance was only slightly degraded.

5.3 Realistic implementation

It is unrealistic to expect that the MPC controller could maintain a complete, accurate system representation. To investigate this case, the MPC internal model was altered to make use of a

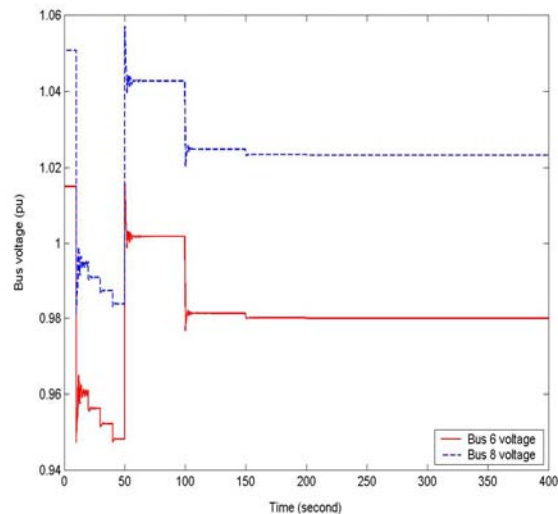


Figure 9. Voltage response, imprecise load response

simplified generator representation. Also the OXL was removed from the MPC model. Furthermore, load uncertainty was incorporated, as in Section 5.2. Voltage response and load control signals are shown in Figures 10 and 11 respectively. It is apparent that model approximation did not adversely affect the quality of MPC regulation.

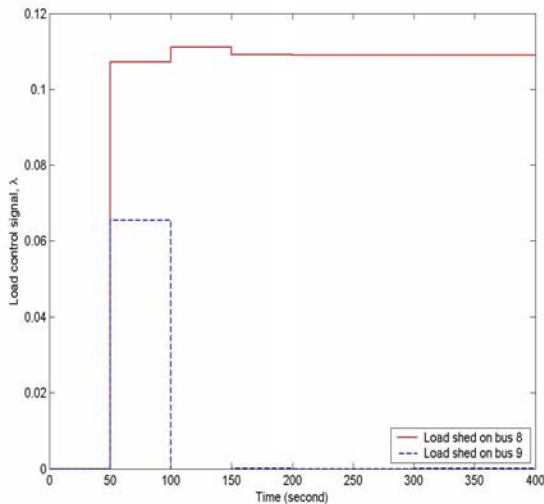


Figure 10. Voltage response, realistic implementation

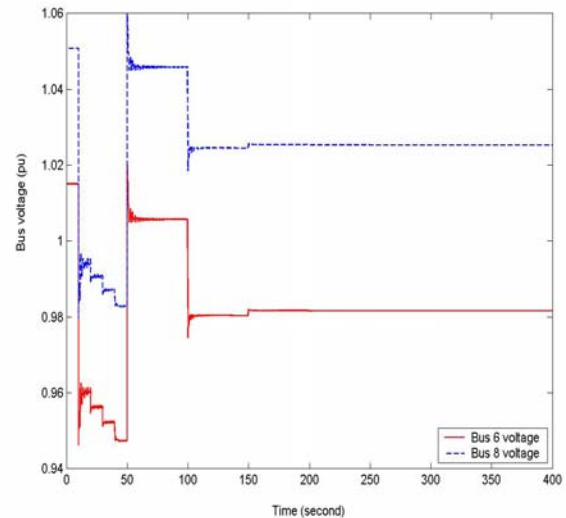


Figure 11. Load control signal, realistic implementation

These results are encouraging, though certainly not definitive. The degree to which MPC can tolerate model inaccuracy is core to practical power system implementation. This is the focus of on-going research.

6. CONCLUSIONS

Many consumer installations include components that can be tripped with negligible short-term effects. Consolidation of such load fragments provides a non-disruptive load control capability that can be used to alleviate voltage collapse. The paper explores a hierarchical control structure which consists of a lower level controller (consolidator) that communicates with loads, together with a higher level controller that formulates coordinated responses to threats of voltage instability. It has been shown in the paper that model predictive control (MPC) provides a very effective higher-level control strategy.

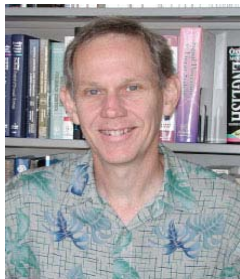
MPC utilizes an internal model of the system to predict response to a disturbance. A dynamic embedded optimization problem is formulated to determine the minimum load shedding required to restore voltages to acceptable levels. It is shown that the use of trajectory sensitivities allows this optimization to be reduced to a linear programming problem. This simplification, together with MPC model approximations, gives rise to discrepancies between predicted and actual system behaviour. Hence the derived controls are slightly sub-optimal. However MPC runs as a discrete-time process, so errors are corrected by subsequent repetition of the MPC prediction/optimization algorithm.

REFERENCES

1. U.S.-Canada Power System Outrage Task Force, *Final Report on the August 14, 2003 Blackout in the United States and Canada: Causes and Recommendations*, 2004
2. C. Taylor, "Concepts of undervoltage load shedding for voltage stability," *IEEE Transactions on Power Delivery*, vol. 7, no. 2, pp. 480–488, 1992.
3. S. Arnborg, G. Andersson, D. Hill, and I. Hiskens, "On undervoltage load shedding in power systems," *Electrical Power and Energy Systems*, vol. 19, no. 2, pp. 141–149, 1997.
4. T. Van Cutsem and C. Vournas, *Voltage Stability of Electric Power Systems*. Kluwer Academic Publishers, 1998.

5. C. Moors, D. Lefebvre, and T. Van Cutsem, "Load shedding controllers against voltage instability: A comparison of designs," in *Proceedings of the 2001 IEEE Porto Power Tech Conference*, Porto, Portugal, 2001.
6. M. Zima and G. Andersson, "Stability assessment and emergency control method using trajectory sensitivities," in *Proceedings of the 2003 IEEE Bologna Power Tech Conference*, vol. 2, Bologna, Italy, pp. 219–225, 2003.
7. J. Eto, C. Goldman, G. Heffner, B. Kirby, J. Kueck, M. Kintner-Meyer, J. Dagle, T. Mount, W. Schultz, R. Thomas, and R. Zimmerman, "Innovative developments in load as a reliability resource," in *Proceedings of the IEEE PES Winter Meeting*, vol. 2, New York, pp. 1002–1004, 2002.
8. D. Backer, "Technologies for fast load control," in *Proceedings of the IEEE PES Winter Meeting*, New York, 2002.
9. J. Rawlings, "Tutorial overview of model predictive control," *IEEE Control Systems Magazine*, vol. 20, no. 3, pp. 38–52, 2000.
10. E. Camacho and C. Bordons, *Model Predictive Control*, 2nd ed. New York: Springer Verlag, 2004.
11. S. Galán and P. Barton, "Dynamic optimization of hybrid systems," *Computers chem. Engng*, vol. 22, Suppl., pp. S183–S190, 1998.
12. I. Hiskens, "Systematic tuning of nonlinear power system controllers," in *Proceedings of the 2002 IEEE International Conference on Control Applications*, Glasgow, Scotland, 2002, pp. 19–24.
13. I. Hiskens and M. Pai, "Trajectory sensitivity analysis of hybrid systems," *IEEE Transactions on Circuits and Systems I: Fundamental Theory and Applications*, vol. 47, no. 2, pp. 204–220, 2000.
14. C. Taylor (convenor), "Modeling of voltage collapse including dynamic phenomena," CIGRE TF38-02-11, Brochure No. 75, 1993.
15. P. Kundur, *Power System Stability and Control*. EPRI Power System Engineering Series, McGraw Hill, 1994.
16. P. Sauer and M. Pai, *Power System Dynamics and Stability*. Upper Saddle River, NJ: Prentice Hall, 1998.
17. IEEE Std 421.5-1992, *IEEE Recommended Practice for Excitation System Models for Power System Stability Studies*. New York: Institute of Electrical and Electronics Engineers, Inc., 1992.
18. I. Hiskens, "Power system modeling for inverse problems," *IEEE Transactions on Circuits and Systems I: Regular Papers*, vol. 51, no. 3, pp. 539–551, 2004.

ABOUT THE AUTHORS



I. A. Hiskens is a Professor of Electrical and Computer Engineering at the University of Wisconsin-Madison. He received the B.Eng. degree in electrical engineering and B.App.Sc. degree in mathematics from the Capricornia Institute of Advanced Education, Rockhampton, Australia, in 1980 and 1983, respectively, and the Ph.D. degree from the University of Newcastle, Australia, in 1991. He has held prior appointments with the Queensland Electricity Supply Industry, Queensland, Australia, from 1980 to 1992, the University of Newcastle, from 1992 to 1999, and the University of Illinois at Urbana-Champaign, from 1999 to 2002. His major research interests lie in the area of power system analysis, in particular system dynamics, security, and numerical techniques. Other research interests include nonlinear and hybrid systems, and control.

B. Gong is a Ph.D. candidate in Electrical and Computer Engineering at the University of Wisconsin-Madison. He received the B.S. and M.S. degrees from the Department of Automation at Tsinghua University, China in 1999 and 2002. His Ph.D. is focused on the use of model predictive control for emergency control of large disturbances in power systems. His research interests lie in the areas of control, optimization and power system applications.

